

Saastad Farm / Land for Rent

request for

february 2, 2015

PROPOSAL

2,504.71[±]
cropland acres



Saastad Farm / Land for Rent

Steffes Group, Inc., 2000 Main Avenue East, West Fargo, ND 58078
Scott Steffes ND81, Rodney Steffes, Max Steffes, ND999 - Agent
800.726.8609 | 701.237.9173 | SteffesGroup.com



REQUEST for Proposal Criteria

2,504.71 +/- Cropland Acres

LENGTH OF AGREEMENT: Crop years 2015, 2016, 2017 (3 years)

CROPLAND PAYMENTS: 2015 rent due and payable upon signing the rental agreement and due on March 1st of 2016 and 2017. Proposal should be submitted based on a per acre basis. Final determination of actual FSA Cropland Acres will be determined at contract signing and may be adjusted as acres are identified.

BUILDING RENTAL: The rental for the "Building" will be due payable the same time as the Cropland payments. Possession of the building will be granted at contract signing.

ADDITIONAL TERMS:

- Notification and award of the farm(s) and building will be given once evaluations have been completed on or before 5PM Friday, February 6th. Contract signing will take place at the Steffes Group office in West Fargo, ND.
- Only offers to purchase the Bin Site should be submitted. Offers to rent the bin site will not be considered.
- Offers on the Building & Bin Site should be whole dollar amounts.

CONSIDERATIONS:

- While price is a significant factor, it will not be the only criteria to award the final rental agreement.
- Stewardship of the land, excellent farming practices, quality equipment, capacity and resources will all be factors.
- **PLEASE NOTE:** If land is Prevent Planted, producer must plant turnips & tillable radishes on fallow ground for that crop year.

The Saastad family is seeking proposals to enter into a Tenant/Landlord relationship for the following described real property located in Hammer, Webster, and Harding Townships of Ramsey County, North Dakota.

- Interested parties must present a comprehensive proposal in a professional manner that proves and demonstrates these abilities. The proposals might include timelines of farm histories, inventories of equipment available, projected crop rotations, letters of recommendations from other landlords/vendors or lenders.
- Demonstration or proof of financial stability/position will also be considered.
- All positive criteria will be evaluated so any pertinent data, pictures, history and qualifications will be helpful.
- Be professional, comprehensive & detailed in your packages.
- The proposals must be in the form of a written document. An oral presentation will not be considered.
- The land, building, and Bin site are offered separately, together, or in any combinations thereof.
- Each proposal submitted may include multiple entities. Creative options may be presented; however, it should be submitted as an "option" with any pertinent details for considerations, and separate from your primary proposal.

For details please contact Max Steffes or Rodney Steffes at 701.237.9173. All proposals must be postmarked or hand delivered to the offices of: Steffes Group, 2000 Main Avenue East, West Fargo, ND 58078 no later than February 2nd, 2015.

Farm Site & Map References

Farm #1

907.69 +/- Cropland Acres

Hammer Township

S ½ 15, NE ¼ 15, NE ¼ 21, N ½ N ½ 22, NE ¼ 23 all in 157-64 excluding farmstead located in the S ½ 15

Farm #2

992.82 +/- Cropland Acres

Harding Township

S ½ 30, NE ¼ 30, NW ¼ 31, W ½ SW ¼ 31 all in 156-63 excluding farmstead located in the NE ¼ 30

Webster Township

SE ¼ 24, W ½ NE ¼ 24, NE ¼ SW ¼ 24, SE ¼ NW ¼ 24 all in 156-64

Farm #3

604.20 +/- Cropland Acres

Harding Township

SW ¼ 6, S ½ N ½ 6 all in 156-63

Webster Township

NE ¼ 1, N ½ SE ¼ 1, SE ¼ SE ¼ 1 all in 156-64 excluding farmstead located in the N ½ SE ¼ 1

Offered in three separate farms, together, or in any combination thereof. The building described herein is also available for rent. As part of your proposals, offers to purchase the Bin Site described below are also requested and will be entertained.

Building for Rent:

60' x 136'

34' x 16' 3" overhead door

Sliding door on back side of building

Located in the far NE corner of the NE ¼ section 30 of Harding Township

Bin Site for Sale:

(2) 40,000 bu. Bins

Built in 2012

(3) 30 HP fans on each bin

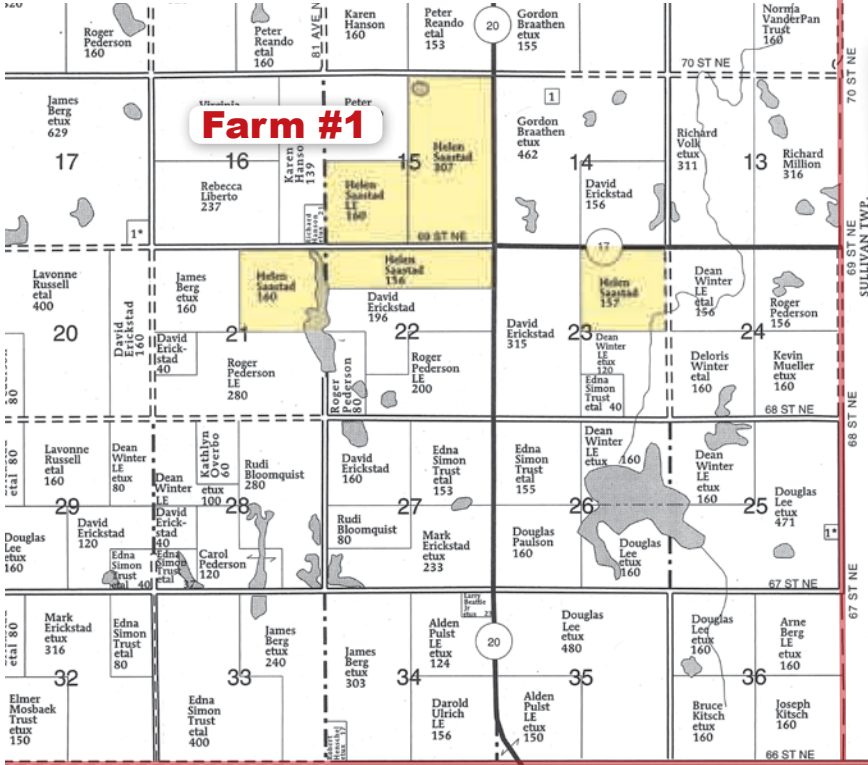
3 phase power

2.12 Acre Lot. Room for expansion.

Located at corner of HWY 20 & 65th St NE in Garske, ND

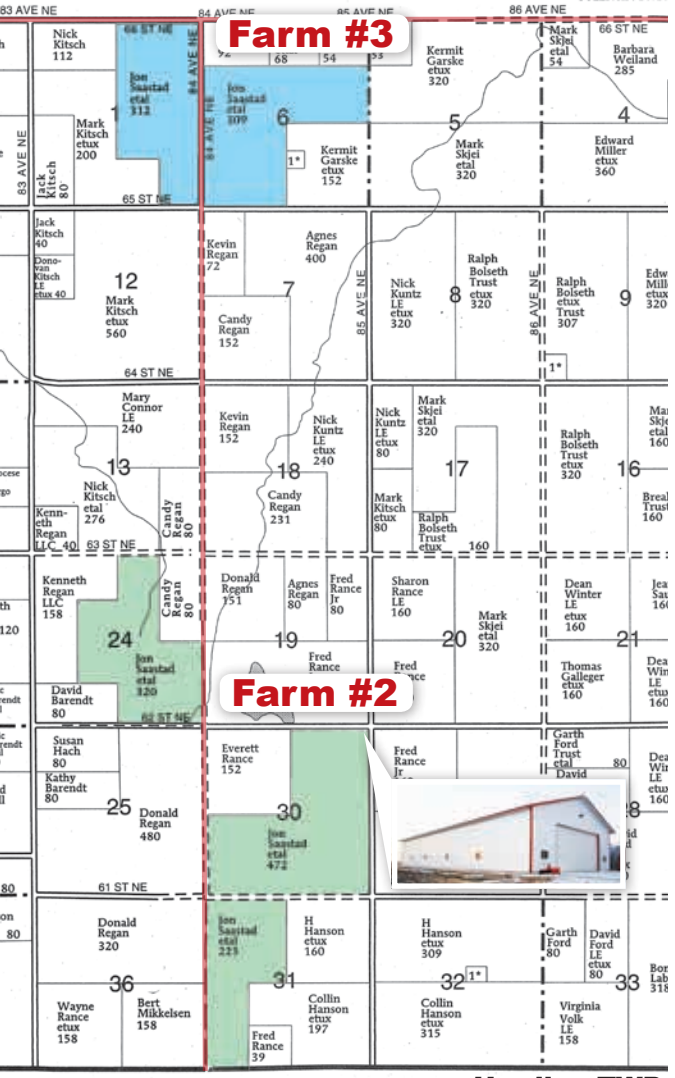
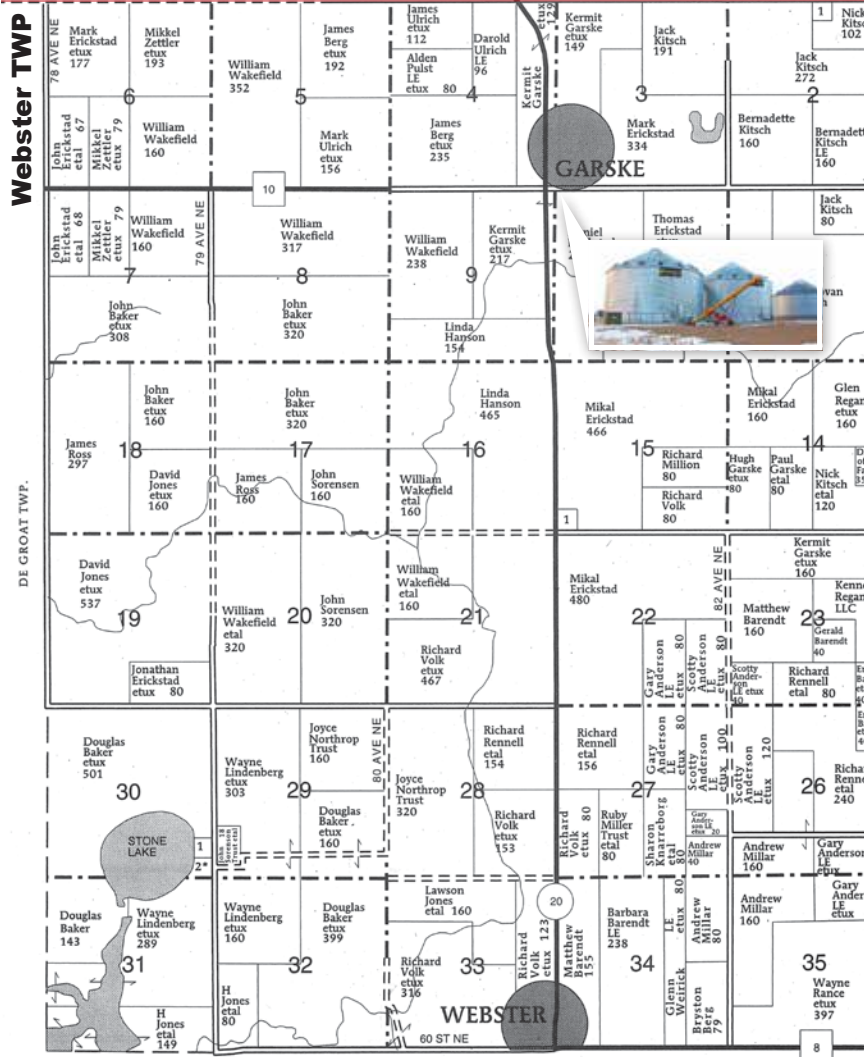
Hammer, Webster, & Harding Townships - Ramsey County

Hammer TWP



Visit SteffesGroup.com
for an Interactive Map
or Scan the QR Code

This block contains an aerial photograph of a farm, likely Farm #1, with a QR code and a website URL. The QR code is located at the bottom left of the aerial image. The website URL is prominently displayed in the center. The text 'Visit SteffesGroup.com for an Interactive Map or Scan the QR Code' is written in a white, sans-serif font over the bottom portion of the aerial image.



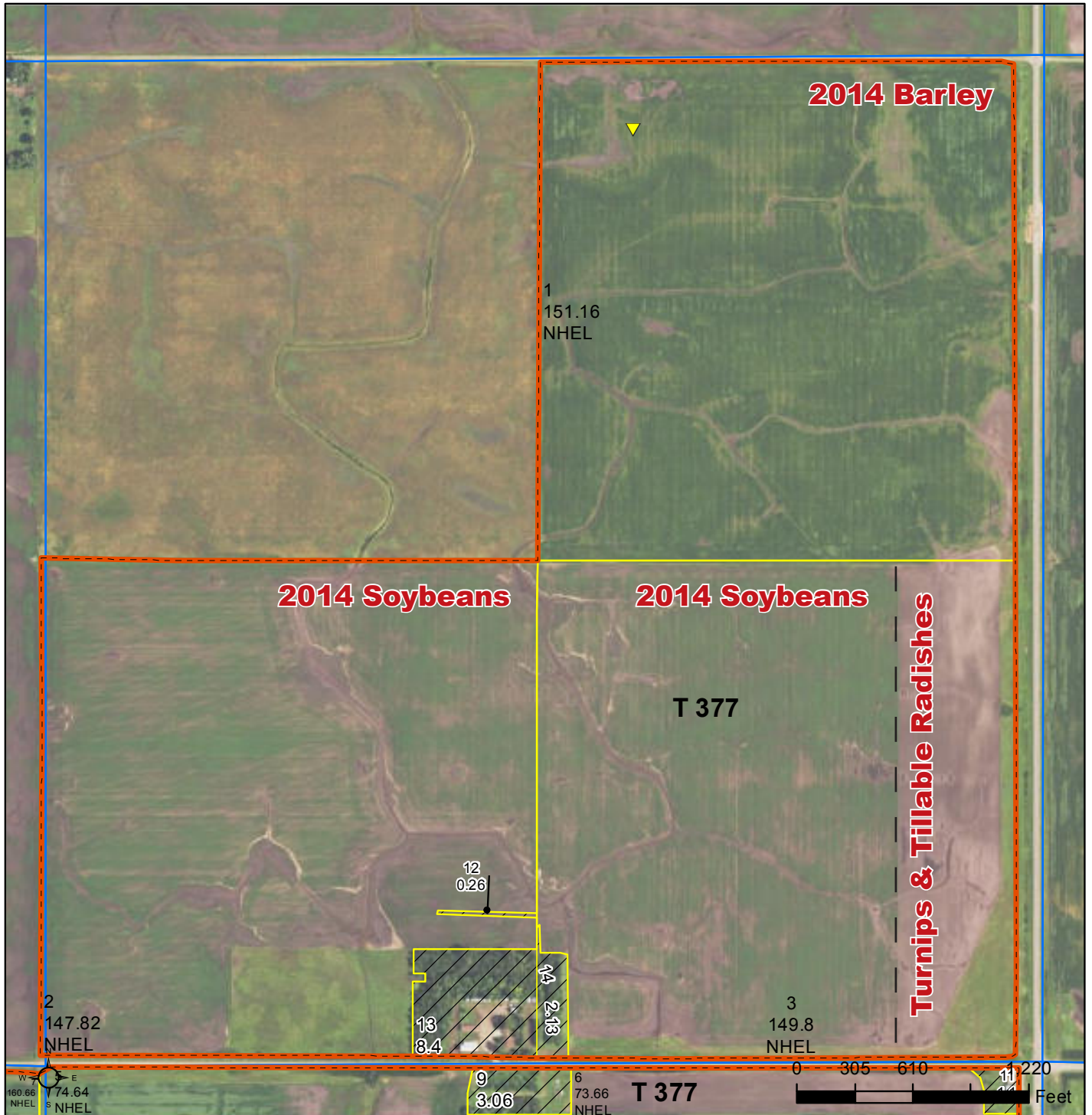
Harding TWP

Farm #1 Aerial Map (1 of 4)



Ramsey County, North Dakota

(Lines Approximate)



Common Land Unit

- Tract Boundary
- Cropland
- PLSS
- Non-Cropland

Wetland Determination Identifiers

- Restricted Use
- Limited Restrictions
- Exempt from Conservation Compliance Provisions

2015 Program Year

Map Created December 01, 2014

Farm 3608

S15 T157N R64W

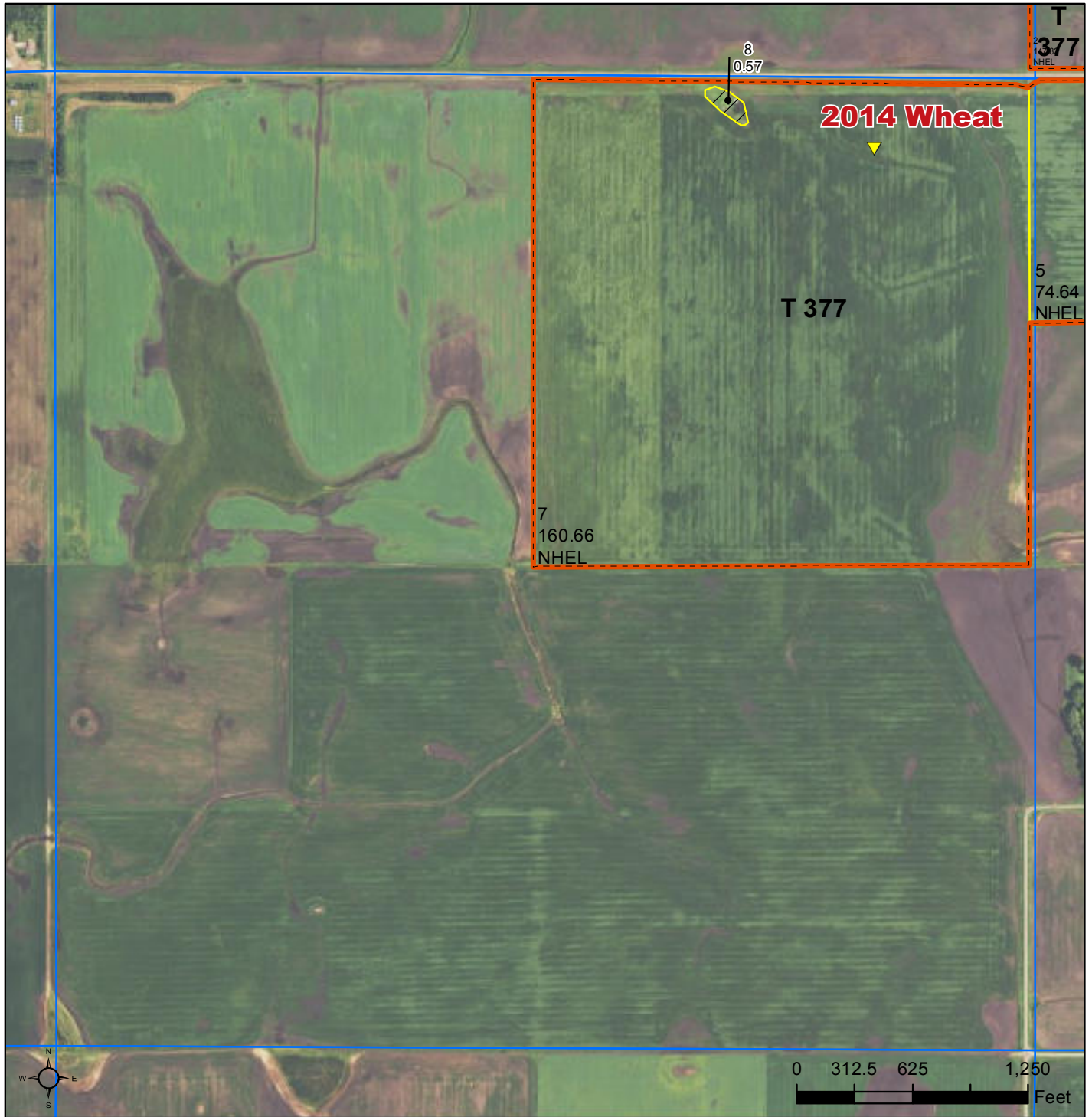
United States Department of Agriculture (USDA) Farm Service Agency (FSA) maps are for FSA Program administration only. This map does not represent a legal survey or reflect actual ownership; rather it depicts the information provided directly from the producer and/or National Agricultural Imagery Program (NAIP) imagery. The producer accepts the data 'as is' and assumes all risks associated with its use. USDA-FSA assumes no responsibility for actual or consequential damage incurred as a result of any user's reliance on this data outside FSA Programs. Wetland identifiers do not represent the size, shape, or specific determination of the area. Refer to your original determination (CPA-026 and attached maps) for exact boundaries and determinations or contact USDA Natural Resources Conservation Service (NRCS).

Farm #1 Aerial Map (2 of 4)



Ramsey County, North Dakota

(Lines Approximate)



- Common Land Unit**
- Tract Boundary
 - PLSS
 - Cropland
 - Non-Cropland

- Wetland Determination Identifiers**
- Restricted Use
 - ▼ Limited Restrictions
 - Exempt from Conservation Compliance Provisions

2015 Program Year

Map Created December 01, 2014

Farm 3608

S21 T157N R64W

United States Department of Agriculture (USDA) Farm Service Agency (FSA) maps are for FSA Program administration only. This map does not represent a legal survey or reflect actual ownership; rather it depicts the information provided directly from the producer and/or National Agricultural Imagery Program (NAIP) imagery. The producer accepts the data 'as is' and assumes all risks associated with its use. USDA-FSA assumes no responsibility for actual or consequential damage incurred as a result of any user's reliance on this data outside FSA Programs. Wetland identifiers do not represent the size, shape, or specific determination of the area. Refer to your original determination (CPA-026 and attached maps) for exact boundaries and determinations or contact USDA Natural Resources Conservation Service (NRCS).

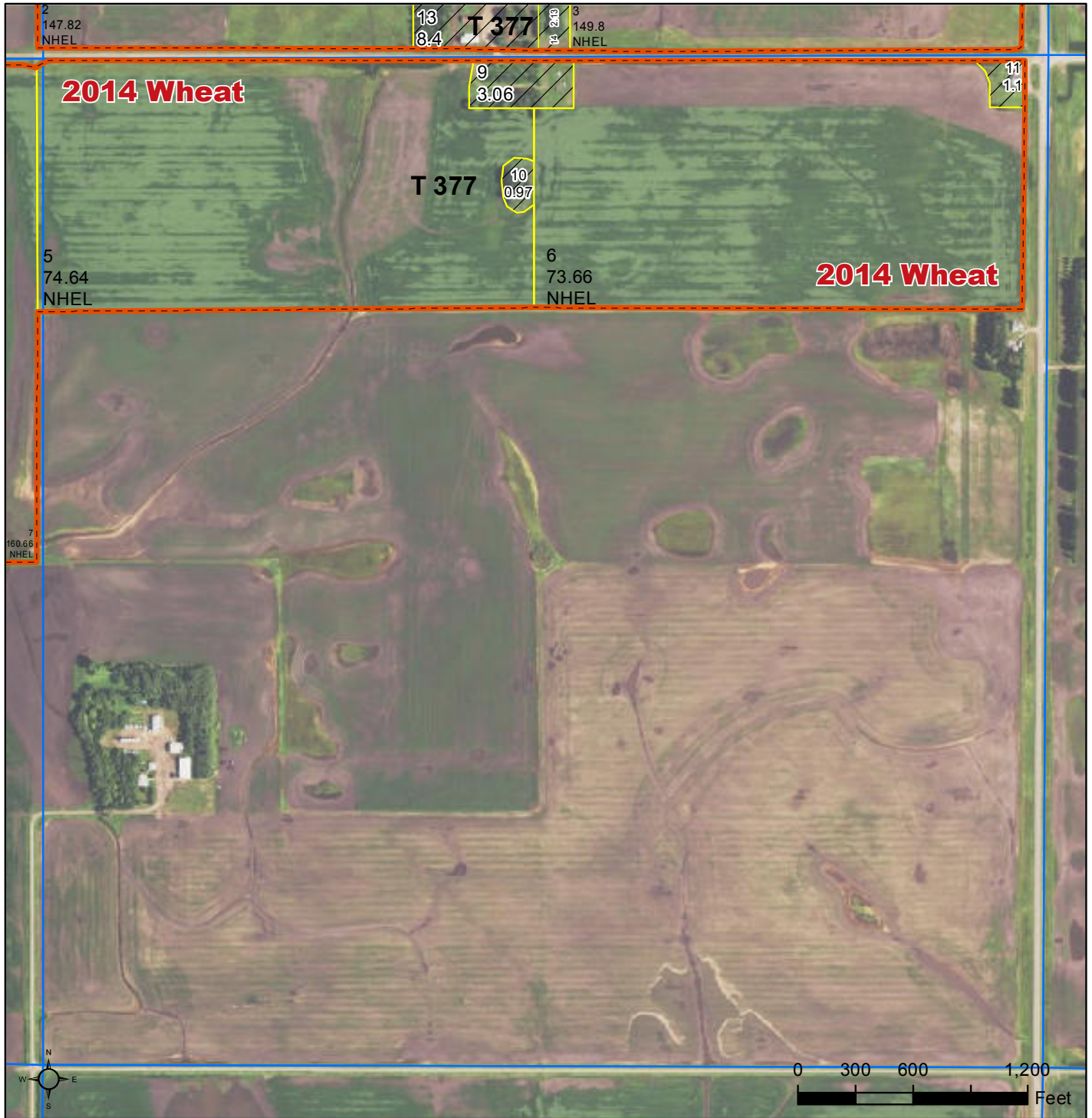
Farm #1 Aerial Map (3 of 4)



United States
Department of
Agriculture

Ramsey County, North Dakota

(Lines Approximate)



Common Land Unit
 Tract Boundary
 Cropland
 PLSS
 Non-Cropland

Wetland Determination Identifiers

- Restricted Use
- ▼ Limited Restrictions
- Exempt from Conservation Compliance Provisions

2015 Program Year

Map Created December 01, 2014

Farm 3608

S22 T157N R64W

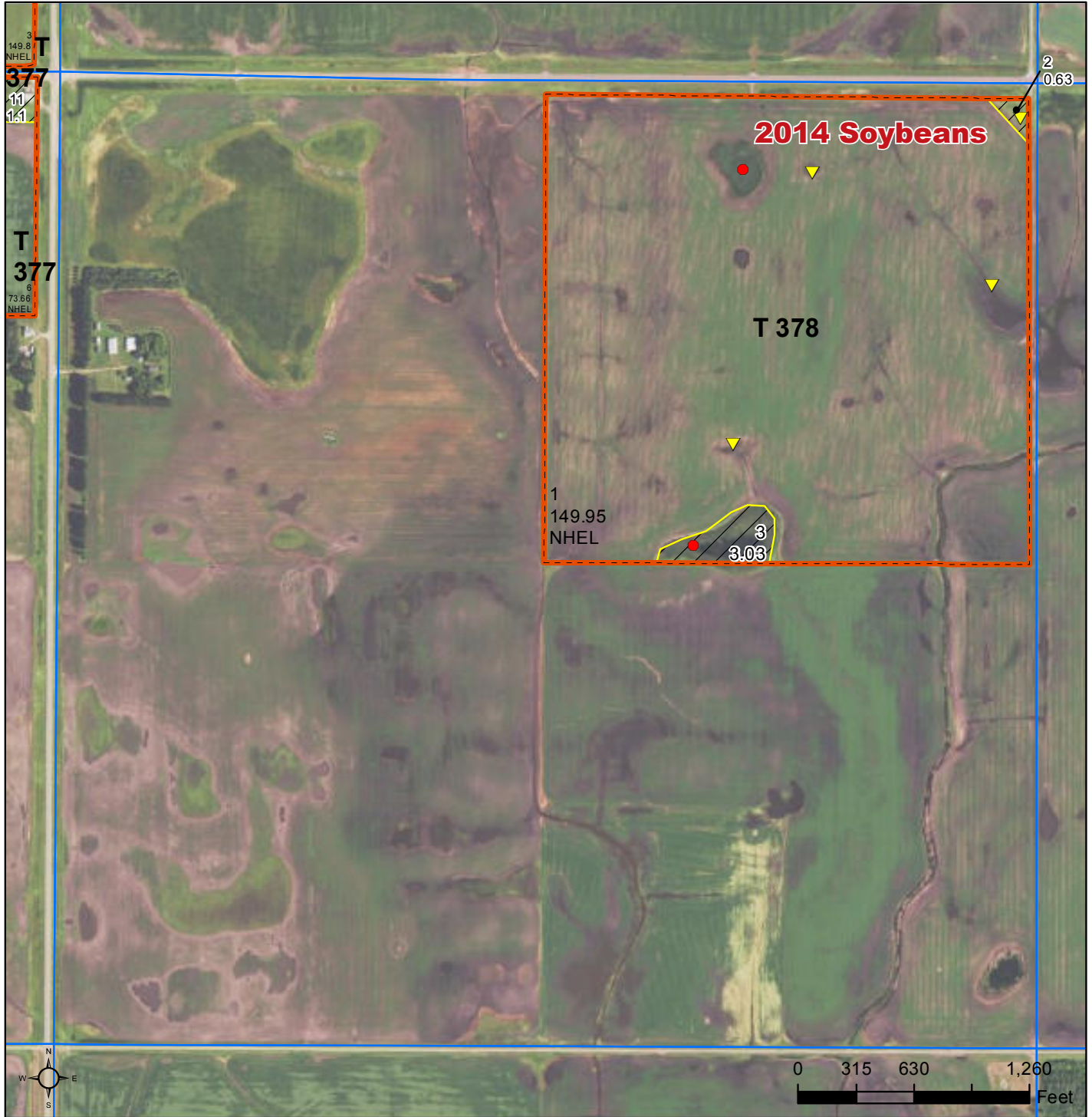
United States Department of Agriculture (USDA) Farm Service Agency (FSA) maps are for FSA Program administration only. This map does not represent a legal survey or reflect actual ownership; rather it depicts the information provided directly from the producer and/or National Agricultural Imagery Program (NAIP) imagery. The producer accepts the data 'as is' and assumes all risks associated with its use. USDA-FSA assumes no responsibility for actual or consequential damage incurred as a result of any user's reliance on this data outside FSA Programs. Wetland identifiers do not represent the size, shape, or specific determination of the area. Refer to your original determination (CPA-026 and attached maps) for exact boundaries and determinations or contact USDA Natural Resources Conservation Service (NRCS).

Farm #1 Aerial Map (4 of 4)



Ramsey County, North Dakota

(Lines Approximate)



- Common Land Unit**
- Tract Boundary
 - PLSS
 - Cropland
 - Non-Cropland

- Wetland Determination Identifiers**
- Restricted Use
 - ▼ Limited Restrictions
 - Exempt from Conservation Compliance Provisions

The NRCS released a new set of soil data on November 6th, 2014. In some cases, soil productivity ratings were changed. We have included the soil data used prior to the 7th of November and the current soil data for reference.

2015 Program Year

Map Created December 01, 2014

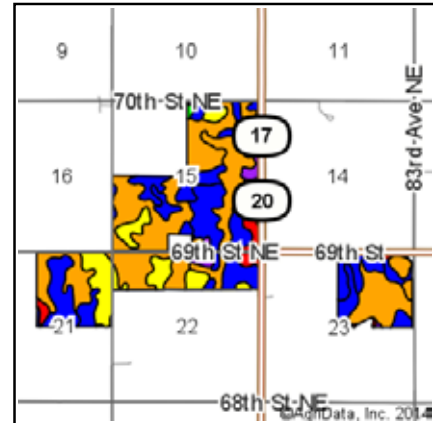
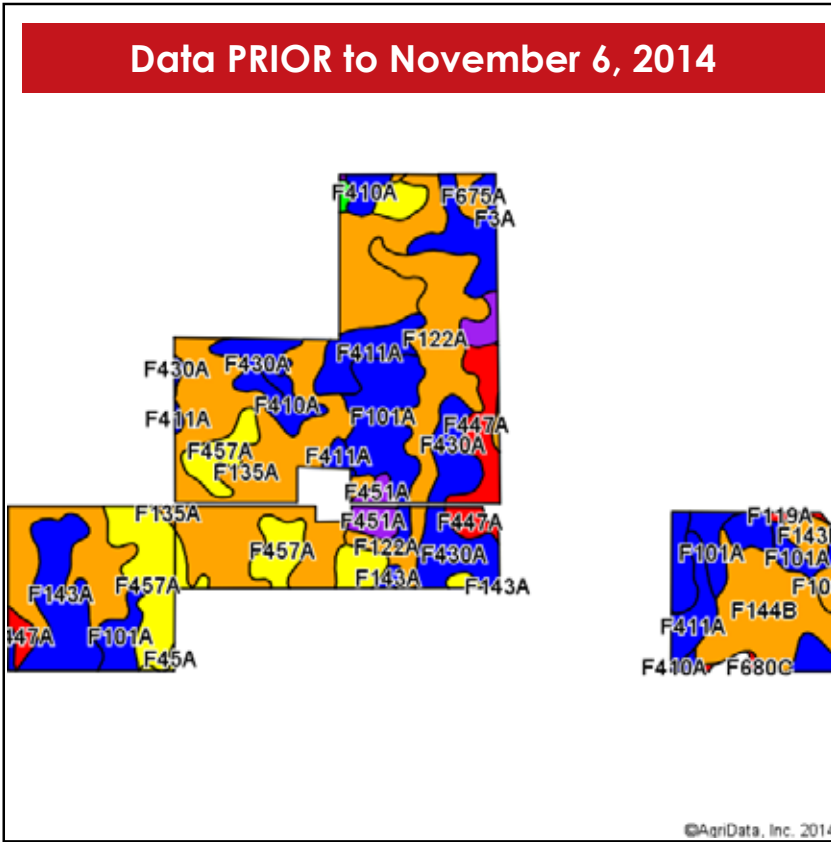
Farm 3608

S23 T157N R64W

United States Department of Agriculture (USDA) Farm Service Agency (FSA) maps are for FSA Program administration only. This map does not represent a legal survey or reflect actual ownership; rather it depicts the information provided directly from the producer and/or National Agricultural Imagery Program (NAIP) imagery. The producer accepts the data 'as is' and assumes all risks associated with its use. USDA-FSA assumes no responsibility for actual or consequential damage incurred as a result of any user's reliance on this data outside FSA Programs. Wetland identifiers do not represent the size, shape, or specific determination of the area. Refer to your original determination (CPA-026 and attached maps) for exact boundaries and determinations or contact USDA Natural Resources Conservation Service (NRCS).

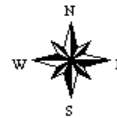
Farm #1 Soil Map (1 of 2)

The NRCS released a new set of soil data on November 6th, 2014. In some cases, soil productivity ratings were changed. We have included the soil data used prior to the 7th of November and the current soil data for reference.



(Lines Approximate)

State: **North Dakota**
 County: **Ramsey**
 Location: **22-157N-64W**
 Township: **Hammer**
 Acres: **907.25**
 Date: **11/25/2014**



Maps Provided By:
surety
 CUSTOMIZED ONLINE MAPPING
 © AgriData, Inc. 2014 www.AgriDataInc.com

Soils data provided by USDA and NRCS.

Viewing soils data as of 11/6/2014

Area Symbol: ND071, Soil Area Version: 19

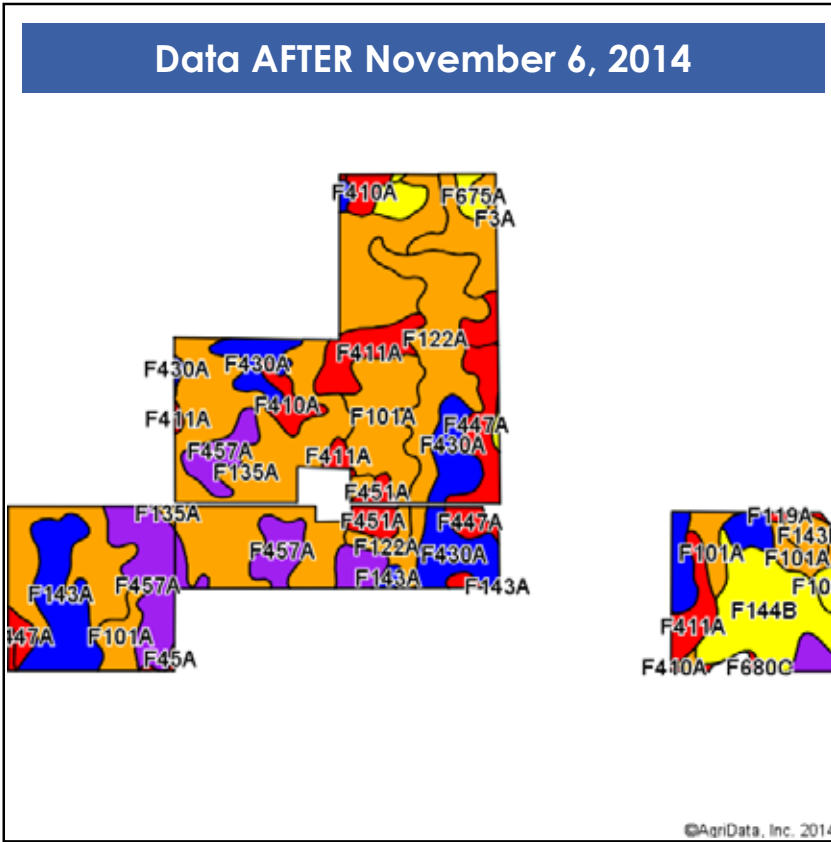
Code	Soil Description	Acres	Percent of field	PI Legend	Non-Irr Class	Productivity Index
F135A	Hamerly-Cresbard loams, 0 to 3 percent slopes	261.88	28.9%		IIs	76
F101A	Hamerly-Wyard loams, 0 to 3 percent slopes	111.10	12.2%		IIC	82
F457A	Colvin-Aberdeen silty clay loams, 0 to 2 percent slopes	89.64	9.9%		IIs	63
F122A	Svea-Cresbard loams, 0 to 3 percent slopes	79.74	8.8%		IIs	80
F430A	Bearden silty clay loam, 0 to 2 percent slopes	76.21	8.4%		IIE	86
F144B	Barnes-Buse loams, 3 to 6 percent slopes	63.71	7.0%		IIE	72
F143A	Barnes-Svea loams, 0 to 3 percent slopes	55.38	6.1%		IIC	86
F411A	Fargo-Hegne silty clays, 0 to 1 percent slopes	46.47	5.1%		IIW	87
F447A	Colvin-Borup complex, saline, 0 to 1 percent slopes	37.02	4.1%		IIIs	41
F451A	Hegne silty clay, saline, 0 to 1 percent slopes	19.69	2.2%		IIIs	56
F410A	Fargo silty clay, 0 to 1 percent slopes	17.97	2.0%		IIW	87
F143B	Barnes-Svea loams, 3 to 6 percent slopes	9.80	1.1%		IIE	77
F461A	Aberdeen silt loam, 0 to 2 percent slopes	9.23	1.0%		IIs	70
F675A	Hamerly-Warsing loams, 0 to 3 percent slopes	8.30	0.9%		IIs	72
F459A	Aberdeen-Fargo silty clay loams, 0 to 2 percent slopes	7.23	0.8%		IIW	81
F100A	Hamerly-Tonka complex, 0 to 3 percent slopes	4.48	0.5%		IIW	76
F45A	Colvin silty clay loam, 0 to 1 percent slopes	3.59	0.4%		IIW	67
F481A	Overly silty clay loam, 0 to 2 percent slopes	2.09	0.2%		IIC	93
F119A	Vallers-Hamerly loams, saline, 0 to 3 percent slopes	1.87	0.2%		IIIs	47
F3A	Parnell silty clay loam, 0 to 1 percent slopes	1.20	0.1%		VW	30
F680C	Barnes-Sioux complex, 3 to 9 percent slopes	0.65	0.1%		IVs	55
Weighted Average						75.7

Area Symbol: ND071, Soil Area Version: 19

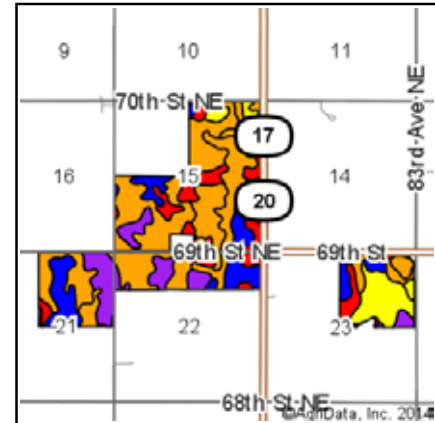
Field borders provided by Farm Service Agency as of 5/21/2008. Aerial photography provided by Aerial Photography Field Office.

Farm #1 Soil Map (2 of 2)

The NRCS released a new set of soil data on November 6th, 2014. In some cases, soil productivity ratings were changed. We have included the soil data used prior to the 7th of November and the current soil data for reference.

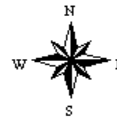


Soils data provided by USDA and NRCS.



(Lines Approximate)

State: **North Dakota**
 County: **Ramsey**
 Location: **22-157N-64W**
 Township: **Hammer**
 Acres: **907.25**
 Date: **11/25/2014**



Maps Provided By:
surety
 CUSTOMIZED ONLINE MAPPING
 © AgriData, Inc. 2014 www.AgriDataInc.com

Area Symbol: ND071, Soil Area Version: 20

Code	Soil Description	Acres	Percent of field	PI Legend	Non-Irr Class	Productivity Index
F135A	Hamerly-Cresbard loams, 0 to 3 percent slopes	261.88	28.9%		IIs	76
F101A	Hamerly-Wyard loams, 0 to 3 percent slopes	111.10	12.2%		IIc	77
F457A	Colvin-Aberdeen silty clay loams, 0 to 2 percent slopes	89.64	9.9%		IIIs	53
F122A	Svea-Cresbard loams, 0 to 3 percent slopes	79.74	8.8%		IIs	79
F430A	Bearden silty clay loam, 0 to 2 percent slopes	76.21	8.4%		IIE	84
F144B	Barnes-Buse loams, 3 to 6 percent slopes	63.71	7.0%		IIE	69
F143A	Barnes-Svea loams, 0 to 3 percent slopes	55.38	6.1%		IIc	85
F411A	Fargo-Hegne silty clays, 0 to 1 percent slopes	46.47	5.1%		IVw	40
F447A	Colvin-Borup complex, saline, 0 to 1 percent slopes	37.02	4.1%		IVw	37
F451A	Hegne silty clay, saline, 0 to 1 percent slopes	19.69	2.2%		IVw	36
F410A	Fargo silty clay, 0 to 1 percent slopes	17.97	2.0%		IVw	40
F143B	Barnes-Svea loams, 3 to 6 percent slopes	9.80	1.1%		IIE	75
F461A	Aberdeen silt loam, 0 to 2 percent slopes	9.23	1.0%		IIs	66
F675A	Hamerly-Warsing loams, 0 to 3 percent slopes	8.30	0.9%		IIs	67
F459A	Aberdeen-Fargo silty clay loams, 0 to 2 percent slopes	7.23	0.8%		IIIw	57
F100A	Hamerly-Tonka complex, 0 to 3 percent slopes	4.48	0.5%		IIIw	64
F45A	Colvin silty clay loam, 0 to 1 percent slopes	3.59	0.4%		IVw	45
F481A	Overly silty clay loam, 0 to 2 percent slopes	2.09	0.2%		IIc	89
F119A	Vallers-Hamerly loams, saline, 0 to 3 percent slopes	1.87	0.2%		IVs	45
F3A	Parnell silty clay loam, 0 to 1 percent slopes	1.20	0.1%		Vw	25
F680C	Barnes-Sioux complex, 3 to 9 percent slopes	0.65	0.1%		IVs	55
Weighted Average						69.2

Area Symbol: ND071, Soil Area Version: 20

Field borders provided by Farm Service Agency as of 5/21/2008. Aerial photography provided by Aerial Photography Field Office.

Farm #1 Abbreviated 156 EZ

Form : FSA-156EZ



United States Department of Agriculture
Farm Service Agency

Program Year : 2014

Date : Jan 31, 2014

See Page 2 for non-discriminatory Statements.

Abbreviated 156 Farm Record

State : NORTH DAKOTA
County : RAMSEY

Farm Number : 3608
Tract Number : 377

Description : NE-S15-NE21-NN22-157-64

FAV/WR History : No

BIA Unit Range Number :

HEL Status : NHEL: No agricultural commodity planted on undetermined fields

Wetland Status : Tract does not contain a wetland

WL Violations :

Owners : HELEN SAASTAD

Other Producers : JON HAROLD SAASTAD , PAUL ANTON SAASTAD

Tract Land Data

Farm Land	Cropland	DCP Cropland	WBP	WRP	CRP	GRP	
774.23	757.74	757.74	0.00	0.00	0.00	0.00	
State Conservation	Other Conservation	Effective DCP Cropland	Double Cropped	MPL	FWP	EWP	DCP Ag. Related Activity
0.00	0.00	757.74	0.00	0.00	0.00	0.00	0.00

DCP Crop Data

Crop Name	Base Acres	CCC-505 CRP Reduction Acres	PTPP Reduction Acres	Direct Yield	Counter Cyclical Yield
Wheat	467.50	0.00	0.00	34	34

State : NORTH DAKOTA
County : RAMSEY

Farm Number : 3608
Tract Number : 378

Description : NE23-157-64

FAV/WR History : No

BIA Unit Range Number :

HEL Status : NHEL: No agricultural commodity planted on undetermined fields

Wetland Status : Tract contains a wetland or farmed wetland

WL Violations :

Owners : HELEN SAASTAD

Other Producers : PAUL ANTON SAASTAD , JON HAROLD SAASTAD

Tract Land Data

Farm Land	Cropland	DCP Cropland	WBP	WRP	CRP	GRP	
153.61	149.95	149.95	0.00	0.00	0.00	0.00	
State Conservation	Other Conservation	Effective DCP Cropland	Double Cropped	MPL	FWP	EWP	DCP Ag. Related Activity
0.00	0.00	149.95	0.00	0.00	0.00	0.00	0.00

DCP Crop Data

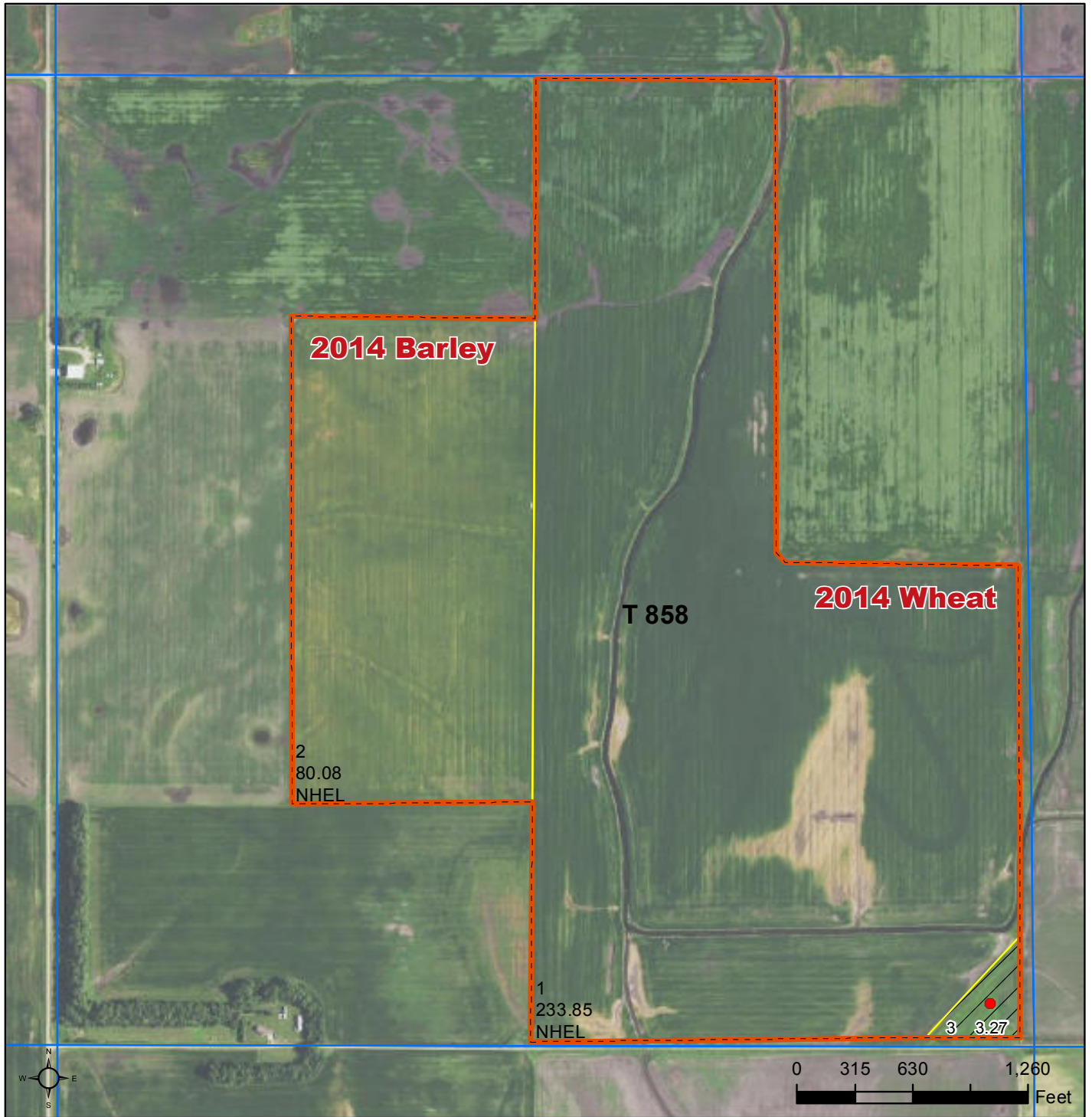
Crop Name	Base Acres	CCC-505 CRP Reduction Acres	PTPP Reduction Acres	Direct Yield	Counter Cyclical Yield
Wheat	92.60	0.00	0.00	34	34
Sunflowers	15.30	0.00	0.00	1510	1510
Barley	16.10	0.00	0.00	40	40
Canola	21.80	0.00	0.00	1334	1334
TOTAL	145.80	0.00	0.00		

Farm #2 Aerial Map (1 of 3)



Ramsey County, North Dakota

(Lines Approximate)



- Common Land Unit**
- Tract Boundary
 - Cropland
 - PLSS
 - Non-Cropland

- Wetland Determination Identifiers**
- Restricted Use
 - ▼ Limited Restrictions
 - Exempt from Conservation Compliance Provisions

2015 Program Year

Map Created December 01, 2014

Farm 4366

S24 T156N R64W

United States Department of Agriculture (USDA) Farm Service Agency (FSA) maps are for FSA Program administration only. This map does not represent a legal survey or reflect actual ownership; rather it depicts the information provided directly from the producer and/or National Agricultural Imagery Program (NAIP) imagery. The producer accepts the data 'as is' and assumes all risks associated with its use. USDA-FSA assumes no responsibility for actual or consequential damage incurred as a result of any user's reliance on this data outside FSA Programs. Wetland identifiers do not represent the size, shape, or specific determination of the area. Refer to your original determination (CPA-026 and attached maps) for exact boundaries and determinations or contact USDA Natural Resources Conservation Service (NRCS).

Farm #2 Aerial Map (2 of 3)



Ramsey County, North Dakota

(Lines Approximate)



- Common Land Unit**
- Tract Boundary
 - Cropland
 - PLSS
 - Non-Cropland

- Wetland Determination Identifiers**
- Restricted Use
 - Limited Restrictions
 - Exempt from Conservation Compliance Provisions

2015 Program Year

Map Created December 01, 2014

Farm 4366

S30 T156N R63W

United States Department of Agriculture (USDA) Farm Service Agency (FSA) maps are for FSA Program administration only. This map does not represent a legal survey or reflect actual ownership; rather it depicts the information provided directly from the producer and/or National Agricultural Imagery Program (NAIP) imagery. The producer accepts the data 'as is' and assumes all risks associated with its use. USDA-FSA assumes no responsibility for actual or consequential damage incurred as a result of any user's reliance on this data outside FSA Programs. Wetland identifiers do not represent the size, shape, or specific determination of the area. Refer to your original determination (CPA-026 and attached maps) for exact boundaries and determinations or contact USDA Natural Resources Conservation Service (NRCS).

Farm #2 Aerial Map (3 of 3)



Ramsey County, North Dakota

(Lines Approximate)



- Common Land Unit PLSS
- Cropland
- Tract Boundary

- Wetland Determination Identifiers**
- Restricted Use
 - ▼ Limited Restrictions
 - Exempt from Conservation Compliance Provisions

2015 Program Year

Map Created December 01, 2014

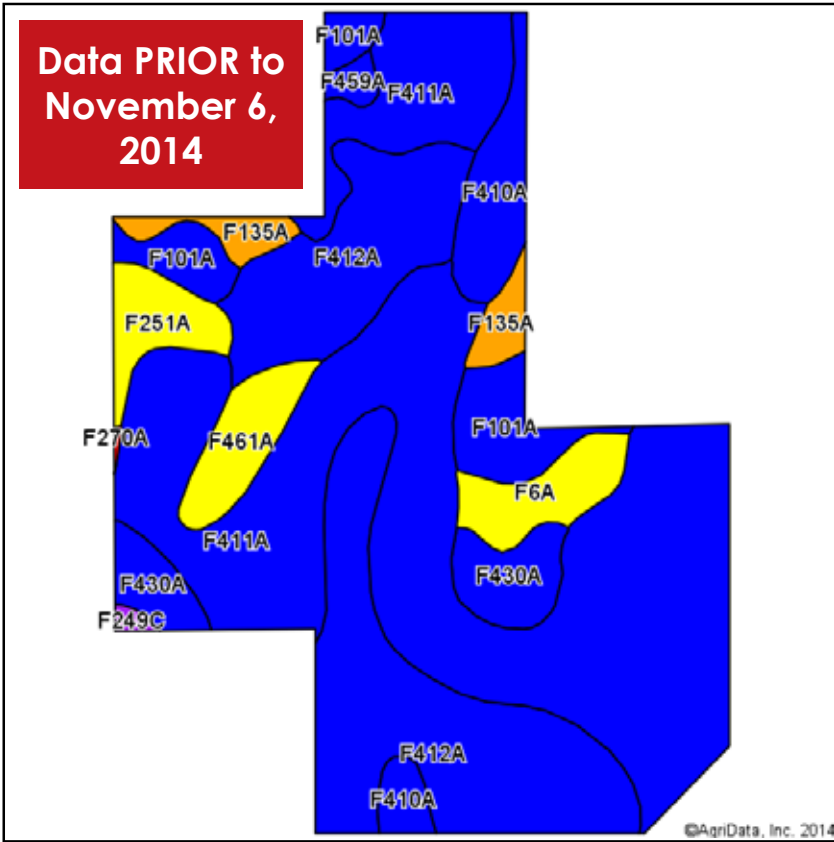
Farm 4366

S31 T156N R63W

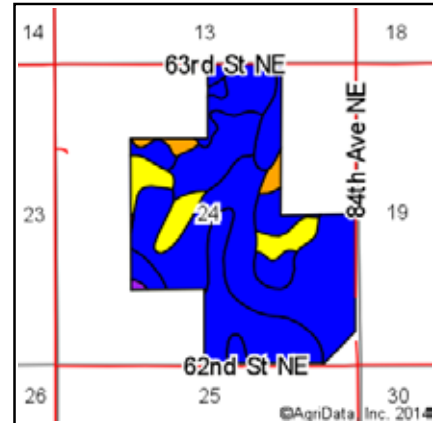
United States Department of Agriculture (USDA) Farm Service Agency (FSA) maps are for FSA Program administration only. This map does not represent a legal survey or reflect actual ownership; rather it depicts the information provided directly from the producer and/or National Agricultural Imagery Program (NAIP) imagery. The producer accepts the data 'as is' and assumes all risks associated with its use. USDA-FSA assumes no responsibility for actual or consequential damage incurred as a result of any user's reliance on this data outside FSA Programs. Wetland identifiers do not represent the size, shape, or specific determination of the area. Refer to your original determination (CPA-026 and attached maps) for exact boundaries and determinations or contact USDA Natural Resources Conservation Service (NRCS).

Farm #2 Soil Map (1 of 4)

The NRCS released a new set of soil data on November 6th, 2014. In some cases, soil productivity ratings were changed. We have included the soil data used prior to the 7th of November and the current soil data for reference.

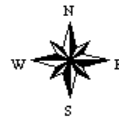


Soils data provided by USDA and NRCS.



(Lines Approximate)

State: **North Dakota**
 County: **Ramsey**
 Location: **24-156N-64W**
 Township: **Webster**
 Acres: **311.92**
 Date: **11/25/2014**



Maps Provided By:
surety
 CUSTOMIZED ONLINE MAPPING
 © AgriData, Inc. 2014 www.AgriDataInc.com

Viewing soils data as of 11/6/2014

Area Symbol: ND071, Soil Area Version: 19

Code	Soil Description	Acres	Percent of field	PI Legend	Non-Irr Class	Productivity Index
F411A	Fargo-Hegne silty clays, 0 to 1 percent slopes	148.26	47.5%		IIw	87
F412A	Hegne silty clay, 0 to 1 percent slopes	79.03	25.3%		IIw	81
F101A	Hamerly-Wyard loams, 0 to 3 percent slopes	17.52	5.6%		IIc	82
F410A	Fargo silty clay, 0 to 1 percent slopes	14.50	4.6%		IIw	87
F430A	Bearden silty clay loam, 0 to 2 percent slopes	14.00	4.5%		IIe	86
F6A	Vallers loam, 0 to 1 percent slopes	9.90	3.2%		IIw	68
F461A	Aberdeen silt loam, 0 to 2 percent slopes	9.65	3.1%		IIs	70
F251A	Divide loam, loamy substratum, 0 to 2 percent slopes	8.59	2.8%		IIs	66
F135A	Hamerly-Cresbard loams, 0 to 3 percent slopes	7.64	2.4%		IIs	76
F459A	Aberdeen-Fargo silty clay loams, 0 to 2 percent slopes	1.90	0.6%		IIw	81
F249C	Esmond-Emrick loams, sandy substratums, 3 to 9 percent slopes	0.74	0.2%		IIIe	58
F270A	Arvilla sandy loam, 0 to 2 percent slopes	0.19	0.1%		IIIe	40
Weighted Average						83

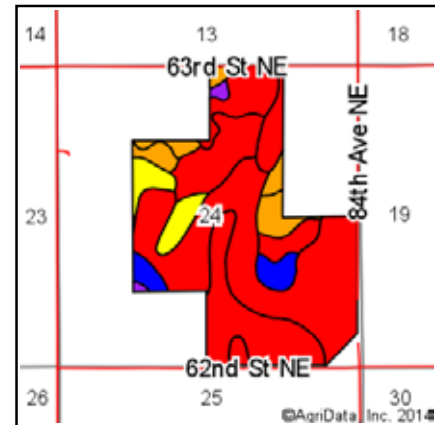
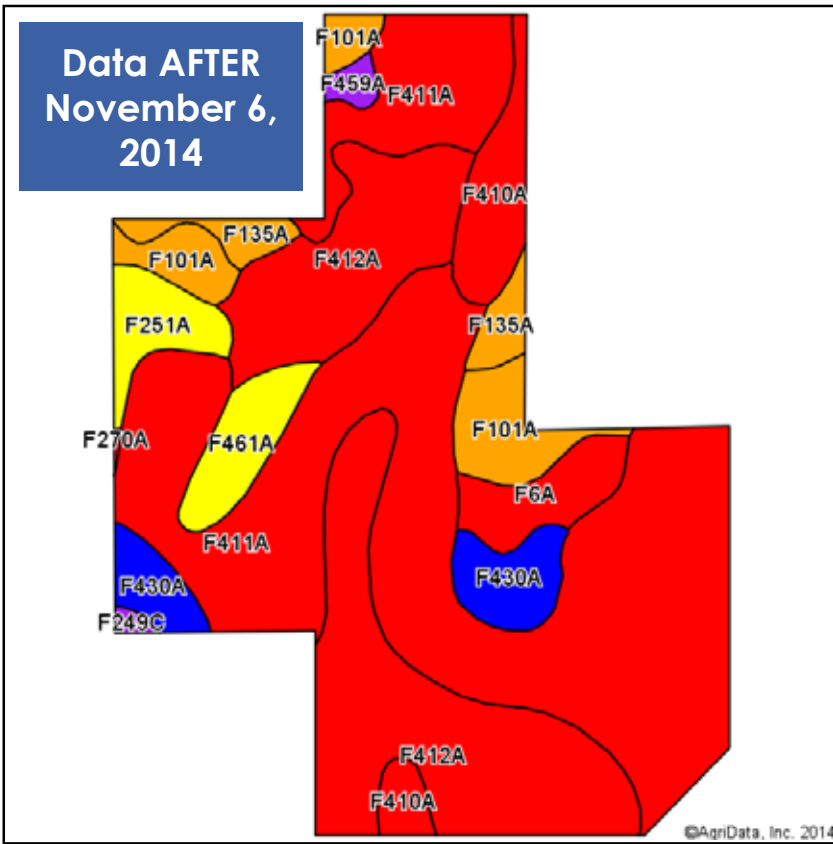
Area Symbol: ND071, Soil Area Version: 19

Field borders provided by Farm Service Agency as of 5/21/2008. Aerial photography provided by Aerial Photography Field Office.



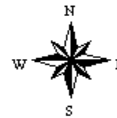
Farm #2 Soil Map (2 of 4)

The NRCS released a new set of soil data on November 6th, 2014. In some cases, soil productivity ratings were changed. We have included the soil data used prior to the 7th of November and the current soil data for reference.



(Lines Approximate)

State: **North Dakota**
 County: **Ramsey**
 Location: **24-156N-64W**
 Township: **Webster**
 Acres: **311.92**
 Date: **11/25/2014**



Maps Provided By:
surety
 CUSTOMIZED ONLINE MAPPING
 © AgriData, Inc. 2014 www.AgriDataInc.com

Soils data provided by USDA and NRCS.

Area Symbol: ND071, Soil Area Version: 20

Code	Soil Description	Acres	Percent of field	PI Legend	Non-Irr Class	Productivity Index
F411A	Fargo-Hegne silty clays, 0 to 1 percent slopes	148.26	47.5%		IVw	40
F412A	Hegne silty clay, 0 to 1 percent slopes	79.03	25.3%		IVw	40
F101A	Hamerly-Wyard loams, 0 to 3 percent slopes	17.52	5.6%		IIc	77
F410A	Fargo silty clay, 0 to 1 percent slopes	14.50	4.6%		IVw	40
F430A	Bearden silty clay loam, 0 to 2 percent slopes	14.00	4.5%		IIe	84
F6A	Vallers loam, 0 to 1 percent slopes	9.90	3.2%		IVw	46
F461A	Aberdeen silt loam, 0 to 2 percent slopes	9.65	3.1%		IIs	66
F251A	Divide loam, loamy substratum, 0 to 2 percent slopes	8.59	2.8%		IIs	63
F135A	Hamerly-Cresbard loams, 0 to 3 percent slopes	7.64	2.4%		IIs	76
F459A	Aberdeen-Fargo silty clay loams, 0 to 2 percent slopes	1.90	0.6%		IIIw	57
F249C	Esmond-Emrick loams, sandy substratums, 3 to 9 percent slopes	0.74	0.2%		IIIe	57
F270A	Arvilla sandy loam, 0 to 2 percent slopes	0.19	0.1%		IIIe	40
Weighted Average						46.7

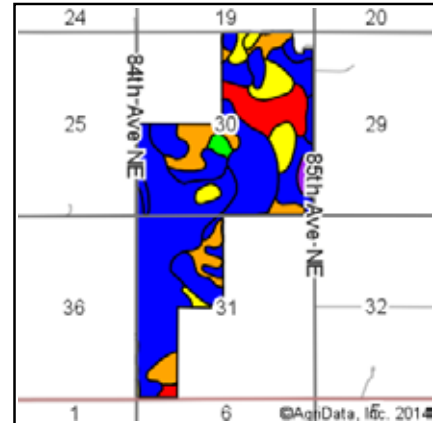
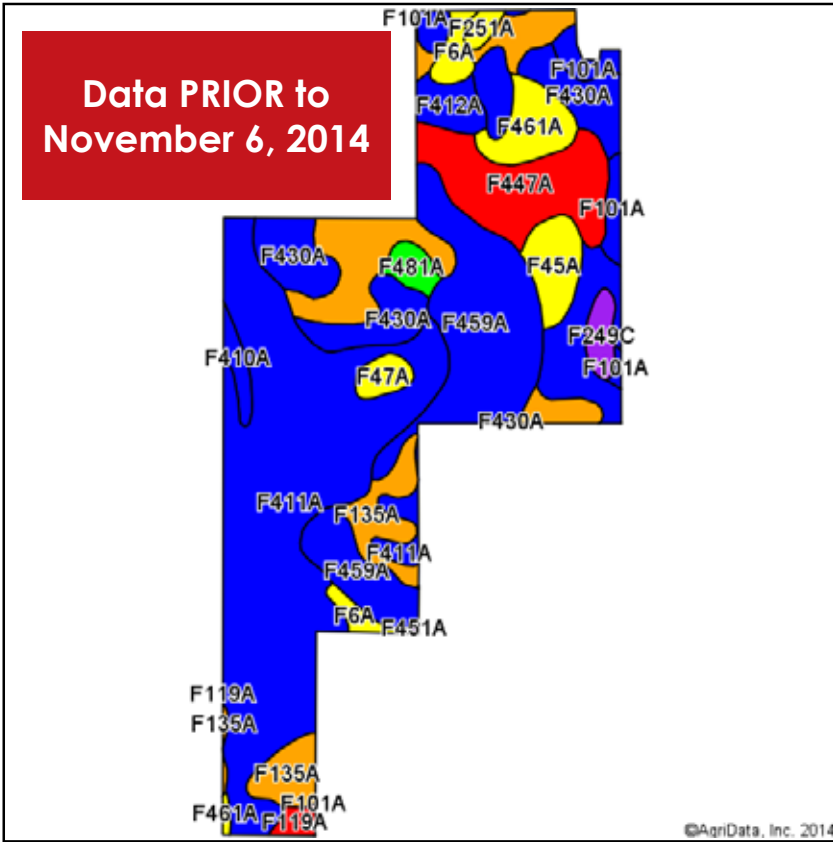
Area Symbol: ND071, Soil Area Version: 20

Field borders provided by Farm Service Agency as of 5/21/2008. Aerial photography provided by Aerial Photography Field Office.



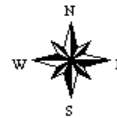
Farm #2 Soil Map (3 of 4)

The NRCS released a new set of soil data on November 6th, 2014. In some cases, soil productivity ratings were changed. We have included the soil data used prior to the 7th of November and the current soil data for reference.



(Lines Approximate)

State: **North Dakota**
 County: **Ramsey**
 Location: **36-156N-64W**
 Township: **Webster**
 Acres: **679.38**
 Date: **11/25/2014**



Maps Provided By:
surety
 CUSTOMIZED ONLINE MAPPING
 © AgriData, Inc. 2014 www.AgriDataInc.com

Soils data provided by USDA and NRCS.

Viewing soils data as of 11/6/2014
 Area Symbol: ND071.. Soil Area Version: 19

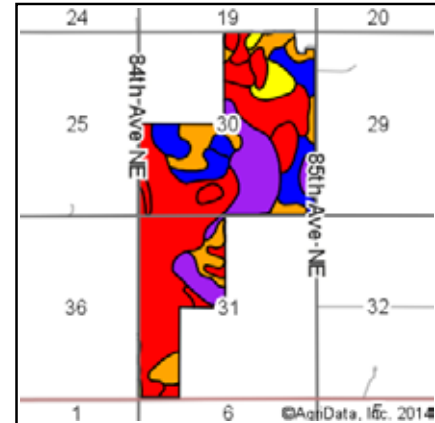
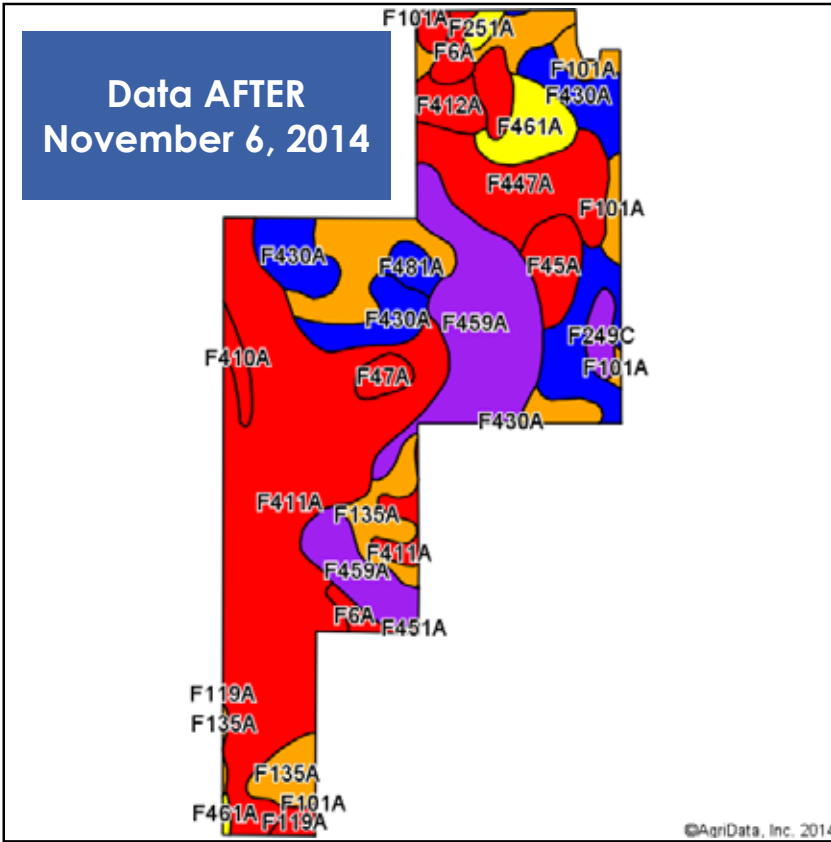
Code	Soil Description	Acres	Percent of field	PI Legend	Non-Irr Class	Productivity Index
F411A	Fargo-Hegne silty clays, 0 to 1 percent slopes	238.61	35.1%		IIw	87
F459A	Aberdeen-Fargo silty clay loams, 0 to 2 percent slopes	102.89	15.1%		IIw	81
F135A	Hamerly-Cresbard loams, 0 to 3 percent slopes	85.46	12.6%		IIs	76
F430A	Bearden silty clay loam, 0 to 2 percent slopes	82.61	12.2%		Ile	86
F447A	Colvin-Borup complex, saline, 0 to 1 percent slopes	53.01	7.8%		IIIs	41
F461A	Aberdeen silt loam, 0 to 2 percent slopes	20.54	3.0%		IIs	70
F45A	Colvin silty clay loam, 0 to 1 percent slopes	17.29	2.5%		IIw	67
F412A	Hegne silty clay, 0 to 1 percent slopes	16.36	2.4%		IIw	81
F101A	Hamerly-Wyard loams, 0 to 3 percent slopes	13.64	2.0%		IIC	82
F6A	Vallers loam, 0 to 1 percent slopes	12.41	1.8%		IIw	68
F249C	Esmond-Emrick loams, sandy substratums, 3 to 9 percent slopes	7.86	1.2%		IIIe	58
F481A	Overly silty clay loam, 0 to 2 percent slopes	7.19	1.1%		IIC	93
F47A	Grano silty clay, 0 to 1 percent slopes	7.04	1.0%		IIw	62
F410A	Fargo silty clay, 0 to 1 percent slopes	6.32	0.9%		IIw	87
F119A	Vallers-Hamerly loams, saline, 0 to 3 percent slopes	4.14	0.6%		IIIs	47
F251A	Divide loam, loamy substratum, 0 to 2 percent slopes	3.81	0.6%		IIs	66
F451A	Hegne silty clay, saline, 0 to 1 percent slopes	0.20	0.0%		IIIs	56
Weighted Average						78.5

Area Symbol: ND071, Soil Area Version: 19

Field borders provided by Farm Service Agency as of 5/21/2008. Aerial photography provided by Aerial Photography Field Office.

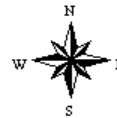
Farm #2 Soil Map (4 of 4)

The NRCS released a new set of soil data on November 6th, 2014. In some cases, soil productivity ratings were changed. We have included the soil data used prior to the 7th of November and the current soil data for reference.



(Lines Approximate)

State: **North Dakota**
 County: **Ramsey**
 Location: **36-156N-64W**
 Township: **Webster**
 Acres: **679.38**
 Date: **11/25/2014**



Maps Provided By:
surety
 CUSTOMIZED ONLINE MAPPING
 © AgriData, Inc. 2014 www.AgriDataInc.com

Soils data provided by USDA and NRCS.

©AgriData, Inc. 2014

Area Symbol: ND071, Soil Area Version: 20

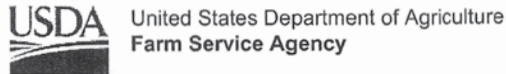
Code	Soil Description	Acres	Percent of field	PI Legend	Non-Irr Class	Productivity Index
F411A	Fargo-Hegne silty clays, 0 to 1 percent slopes	238.61	35.1%		IVw	40
F459A	Aberdeen-Fargo silty clay loams, 0 to 2 percent slopes	102.89	15.1%		IIIw	57
F135A	Hamerly-Cresbard loams, 0 to 3 percent slopes	85.46	12.6%		IIs	76
F430A	Bearden silty clay loam, 0 to 2 percent slopes	82.61	12.2%		Ile	84
F447A	Colvin-Borup complex, saline, 0 to 1 percent slopes	53.01	7.8%		IVw	37
F461A	Aberdeen silt loam, 0 to 2 percent slopes	20.54	3.0%		IIs	66
F45A	Colvin silty clay loam, 0 to 1 percent slopes	17.29	2.5%		IVw	45
F412A	Hegne silty clay, 0 to 1 percent slopes	16.36	2.4%		IVw	40
F101A	Hamerly-Wyard loams, 0 to 3 percent slopes	13.64	2.0%		IIc	77
F6A	Vallers loam, 0 to 1 percent slopes	12.41	1.8%		IVw	46
F249C	Esmond-Emrick loams, sandy substratums, 3 to 9 percent slopes	7.86	1.2%		IIIe	57
F481A	Overly silty clay loam, 0 to 2 percent slopes	7.19	1.1%		IIc	89
F47A	Grano silty clay, 0 to 1 percent slopes	7.04	1.0%		IVw	32
F410A	Fargo silty clay, 0 to 1 percent slopes	6.32	0.9%		IVw	40
F119A	Vallers-Hamerly loams, saline, 0 to 3 percent slopes	4.14	0.6%		IVs	45
F251A	Divide loam, loamy substratum, 0 to 2 percent slopes	3.81	0.6%		IIs	63
F451A	Hegne silty clay, saline, 0 to 1 percent slopes	0.20	0.0%		IVw	36
Weighted Average						54.8

Area Symbol: ND071, Soil Area Version: 20

Field borders provided by Farm Service Agency as of 5/21/2008. Aerial photography provided by Aerial Photography Field Office.

Farm #2 Abbreviated 156 EZ (1 of 2)

Form : FSA-156EZ



Program Year : 2014

Date : Jan 31, 2014

Abbreviated 156 Farm Record

State : NORTH DAKOTA
County : RAMSEY

Farm Number : 4366
Tract Number : 12503

Description : NE-S30-156-63

FAV/WR History : Yes

BIA Unit Range Number :

HEL Status : NHEL: No agricultural commodity planted on undetermined fields

Wetland Status : Tract contains a wetland or farmed wetland

WL Violations :

Owners : PAUL ANTON SAASTAD , JON HAROLD SAASTAD

Other Producers :

Tract Land Data

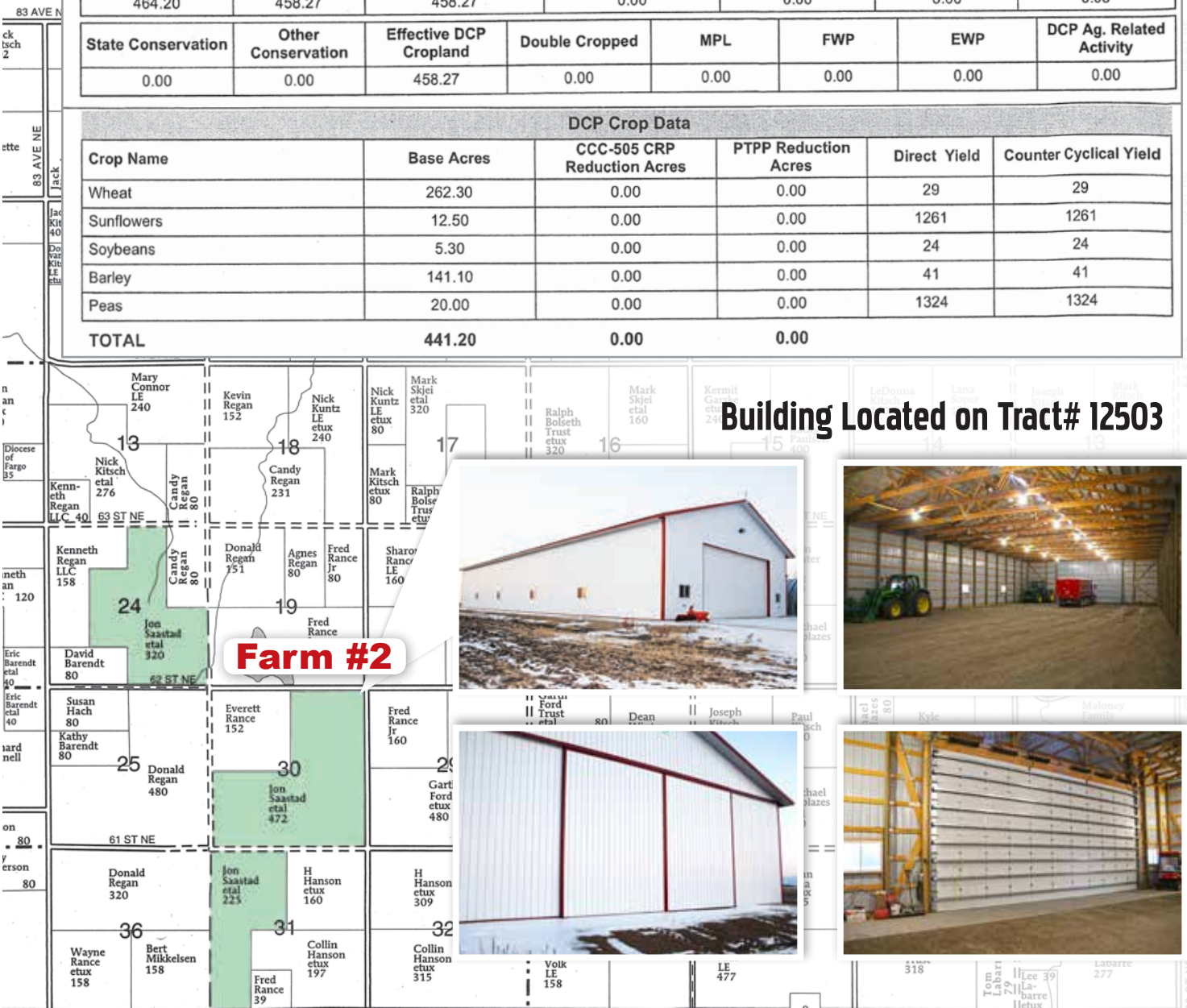
Farm Land	Cropland	DCP Cropland	WBP	WRP	CRP	GRP	
464.20	458.27	458.27	0.00	0.00	0.00	0.00	
State Conservation	Other Conservation	Effective DCP Cropland	Double Cropped	MPL	FWP	EWP	DCP Ag. Related Activity
0.00	0.00	458.27	0.00	0.00	0.00	0.00	0.00

DCP Crop Data

Crop Name	Base Acres	CCC-505 CRP Reduction Acres	PTPP Reduction Acres	Direct Yield	Counter Cyclical Yield
Wheat	262.30	0.00	0.00	29	29
Sunflowers	12.50	0.00	0.00	1261	1261
Soybeans	5.30	0.00	0.00	24	24
Barley	141.10	0.00	0.00	41	41
Peas	20.00	0.00	0.00	1324	1324
TOTAL	441.20	0.00	0.00		

Building Located on Tract# 12503

Farm #2



Harding TWP

MORRIS TWP.

Farm #2 Abbreviated 156 EZ (2 of 2)

Form : FSA-156EZ	 United States Department of Agriculture Farm Service Agency	Program Year : 2014 Date : Jan 31, 2014
Abbreviated 156 Farm Record		

State : NORTH DAKOTA	Farm Number : 4366
County : RAMSEY	Tract Number : 858
Description : WNE-SE-SENW-NESW24-156-64	FAV/WR History : Yes
BIA Unit Range Number :	
HEL Status : NHEL: No agricultural commodity planted on undetermined fields	
Wetland Status : Tract contains a wetland or farmed wetland	
WL Violations :	
Owners : PAUL ANTON SAASTAD , JON HAROLD SAASTAD	
Other Producers :	

Tract Land Data							
Farm Land	Cropland	DCP Cropland	WBP	WRP	CRP	GRP	
317.20	313.93	313.93	0.00	0.00	0.00	0.00	
State Conservation	Other Conservation	Effective DCP Cropland	Double Cropped	MPL	FWP	EWP	DCP Ag. Related Activity
0.00	0.00	313.93	0.00	0.00	0.00	0.00	0.00

DCP Crop Data					
Crop Name	Base Acres	CCC-505 CRP Reduction Acres	PTPP Reduction Acres	Direct Yield	Counter Cyclical Yield
Wheat	178.40	0.00	0.00	29	29
Sunflowers	8.50	0.00	0.00	1261	1261
Soybeans	3.60	0.00	0.00	24	24
Barley	96.00	0.00	0.00	41	41
TOTAL	286.50	0.00	0.00		

State : NORTH DAKOTA	Farm Number : 4366
County : RAMSEY	Tract Number : 10481
Description : NW-WSW31-156-63	FAV/WR History : Yes
BIA Unit Range Number :	
HEL Status : NHEL: No agricultural commodity planted on undetermined fields	
Wetland Status : Tract contains a wetland or farmed wetland	
WL Violations :	
Owners : JON HAROLD SAASTAD , PAUL ANTON SAASTAD	
Other Producers :	

Tract Land Data							
Farm Land	Cropland	DCP Cropland	WBP	WRP	CRP	GRP	
220.62	220.62	220.62	0.00	0.00	0.00	0.00	
State Conservation	Other Conservation	Effective DCP Cropland	Double Cropped	MPL	FWP	EWP	DCP Ag. Related Activity
0.00	0.00	220.62	0.00	0.00	0.00	0.00	0.00

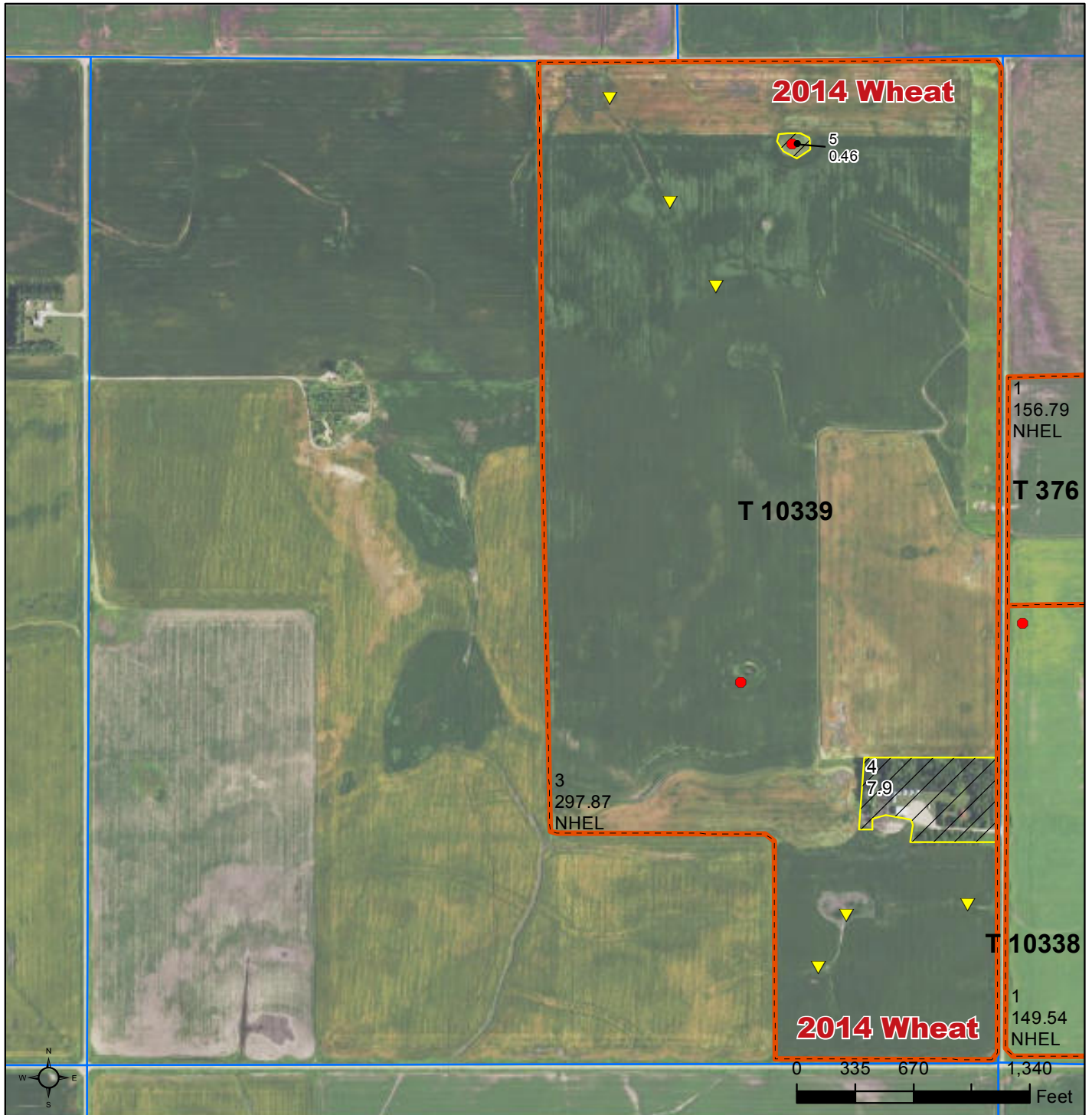
DCP Crop Data					
Crop Name	Base Acres	CCC-505 CRP Reduction Acres	PTPP Reduction Acres	Direct Yield	Counter Cyclical Yield
Wheat	126.60	0.00	0.00	29	29
Sunflowers	6.00	0.00	0.00	1261	1261
Soybeans	2.50	0.00	0.00	24	24
Barley	68.10	0.00	0.00	41	41
TOTAL	203.20	0.00	0.00		

Farm #3 Aerial Map (1 of 2)



Ramsey County, North Dakota

(Lines Approximate)



- Common Land Unit**
- Tract Boundary
 - PLSS
 - Cropland
 - Non-Cropland

- Wetland Determination Identifiers**
- Restricted Use
 - ▼ Limited Restrictions
 - Exempt from Conservation Compliance Provisions

2015 Program Year
Map Created December 01, 2014

Farm 4366

S1 T156N R64W

United States Department of Agriculture (USDA) Farm Service Agency (FSA) maps are for FSA Program administration only. This map does not represent a legal survey or reflect actual ownership; rather it depicts the information provided directly from the producer and/or National Agricultural Imagery Program (NAIP) imagery. The producer accepts the data 'as is' and assumes all risks associated with its use. USDA-FSA assumes no responsibility for actual or consequential damage incurred as a result of any user's reliance on this data outside FSA Programs. Wetland identifiers do not represent the size, shape, or specific determination of the area. Refer to your original determination (CPA-026 and attached maps) for exact boundaries and determinations or contact USDA Natural Resources Conservation Service (NRCS).

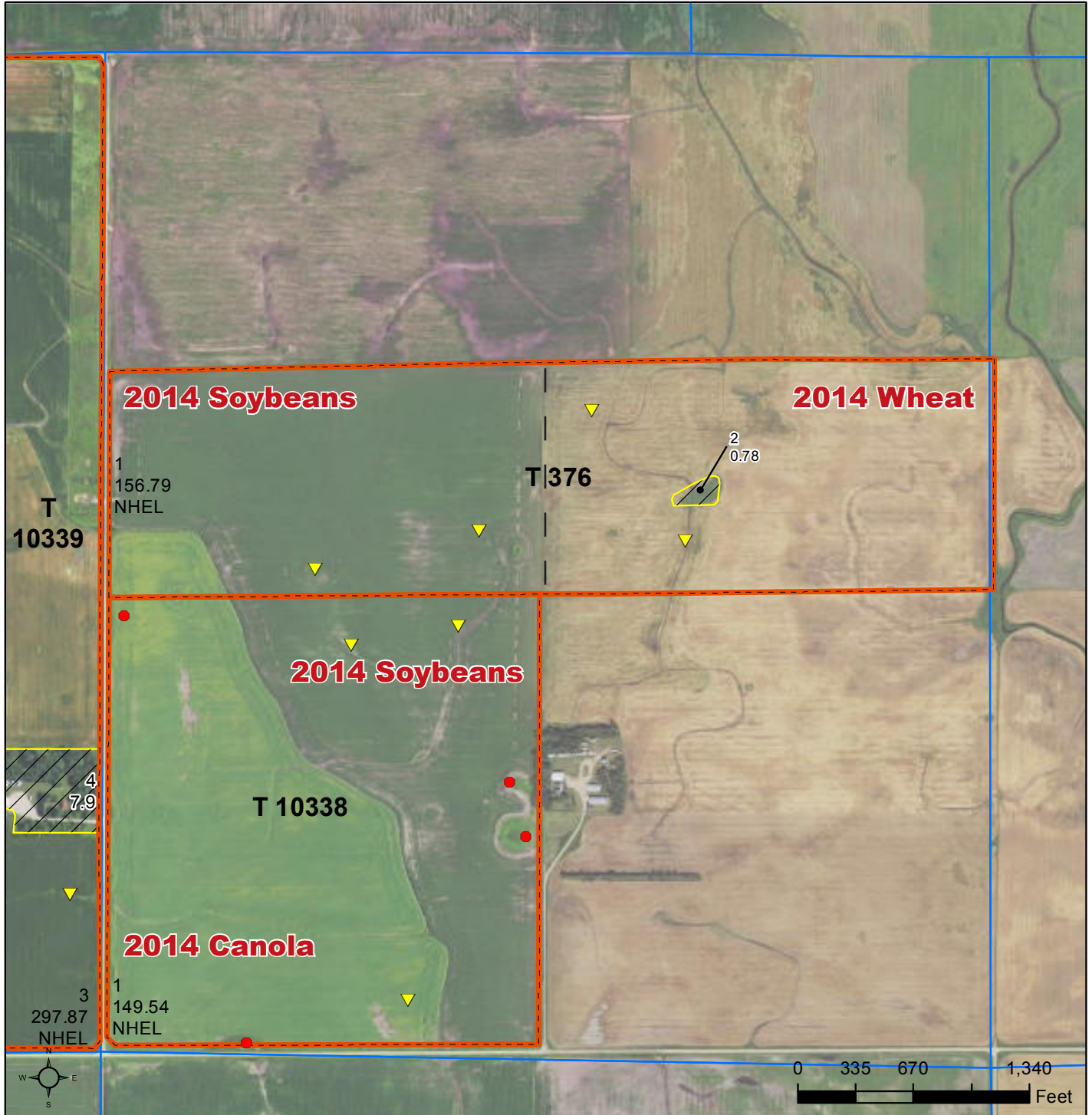
Farm #3 Aerial Map (2 of 2)



United States
Department of
Agriculture

Ramsey County, North Dakota

(Lines Approximate)



- Common Land Unit**
- Tract Boundary
 - PLSS
 - Cropland
 - Non-Cropland

- Wetland Determination Identifiers**
- Restricted Use
 - ▼ Limited Restrictions
 - Exempt from Conservation Compliance Provisions

2015 Program Year

Map Created December 01, 2014

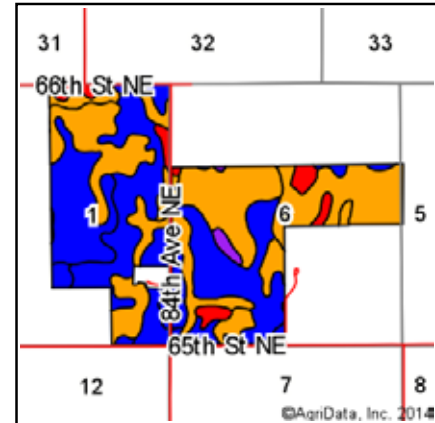
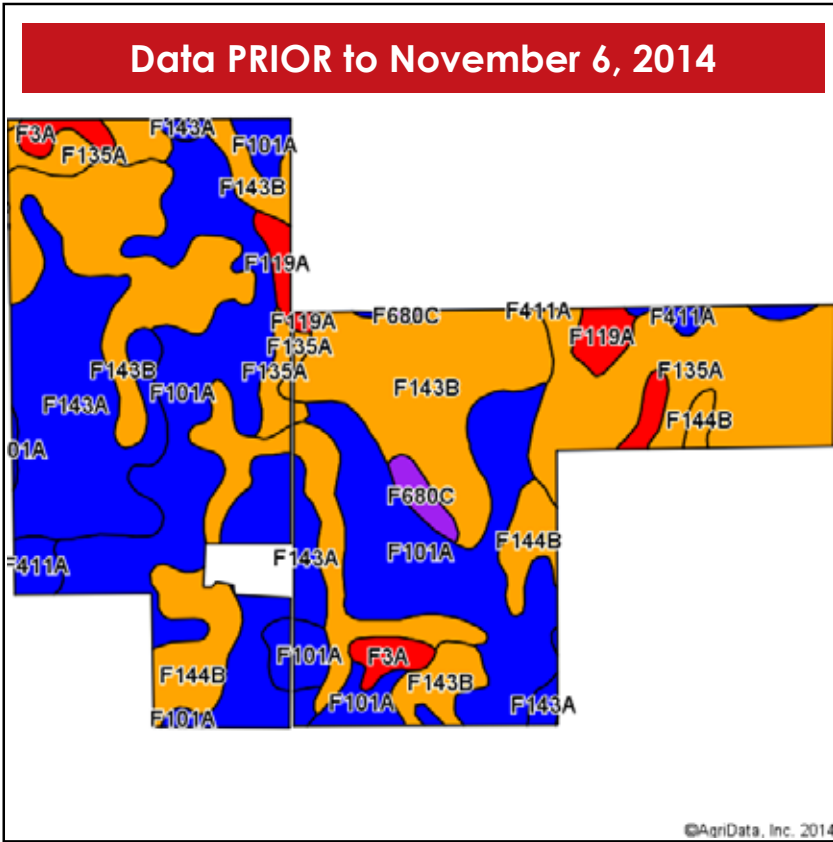
Farm 4366

S6 T156N R63W

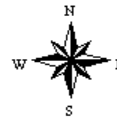
United States Department of Agriculture (USDA) Farm Service Agency (FSA) maps are for FSA Program administration only. This map does not represent a legal survey or reflect actual ownership; rather it depicts the information provided directly from the producer and/or National Agricultural Imagery Program (NAIP) imagery. The producer accepts the data 'as is' and assumes all risks associated with its use. USDA-FSA assumes no responsibility for actual or consequential damage incurred as a result of any user's reliance on this data outside FSA Programs. Wetland identifiers do not represent the size, shape, or specific determination of the area. Refer to your original determination (CPA-026 and attached maps) for exact boundaries and determinations or contact USDA Natural Resources Conservation Service (NRCS).

Farm #3 Soil Map (1 of 2)

The NRCS released a new set of soil data on November 6th, 2014. In some cases, soil productivity ratings were changed. We have included the soil data used prior to the 7th of November and the current soil data for reference.



State: **North Dakota**
 County: **Ramsey**
 Location: **6-156N-63W**
 Township: **Harding**
 Acres: **608.43**
 Date: **11/25/2014**



Maps Provided By:
surety
 CUSTOMIZED ONLINE MAPPING
 © AgriData, Inc. 2014 www.AgriDataInc.com

Soils data provided by USDA and NRCS.

Viewing soils data as of 11/6/2014

Area Symbol: ND071, Soil Area Version: 19

Code	Soil Description	Acres	Percent of field	PI Legend	Non-Irr Class	Productivity Index
F101A	Hamerly-Wyard loams, 0 to 3 percent slopes	172.71	28.4%		IIc	82
F143B	Barnes-Svea loams, 3 to 6 percent slopes	136.17	22.4%		Ile	77
F143A	Barnes-Svea loams, 0 to 3 percent slopes	107.17	17.6%		IIc	86
F135A	Hamerly-Cresbard loams, 0 to 3 percent slopes	88.07	14.5%		IIs	76
F144B	Barnes-Buse loams, 3 to 6 percent slopes	64.03	10.5%		Ile	72
F119A	Vallers-Hamerly loams, saline, 0 to 3 percent slopes	11.64	1.9%		IIIs	47
F3A	Parnell silty clay loam, 0 to 1 percent slopes	10.41	1.7%		Vw	30
F411A	Fargo-Hegne silty clays, 0 to 1 percent slopes	8.93	1.5%		IIw	87
F680C	Barnes-Sioux complex, 3 to 9 percent slopes	5.51	0.9%		IVs	55
F4A	Southam silty clay loam, 0 to 1 percent slopes	3.79	0.6%		VIIIw	8
Weighted Average						77.5

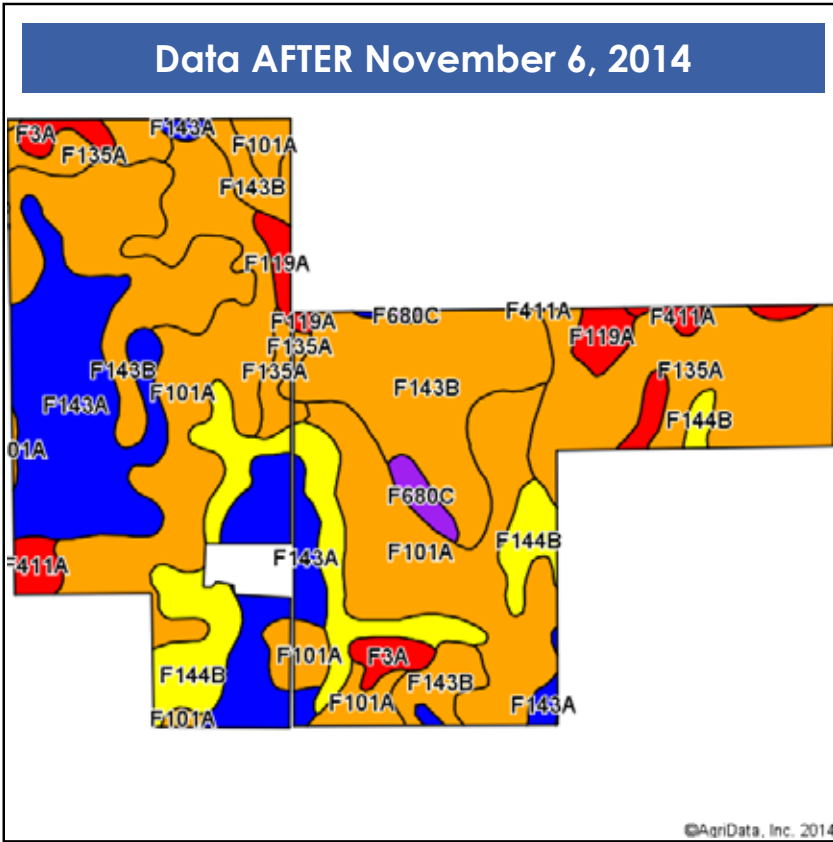
Area Symbol: ND071, Soil Area Version: 19

Field borders provided by Farm Service Agency as of 5/21/2008. Aerial photography provided by Aerial Photography Field Office.

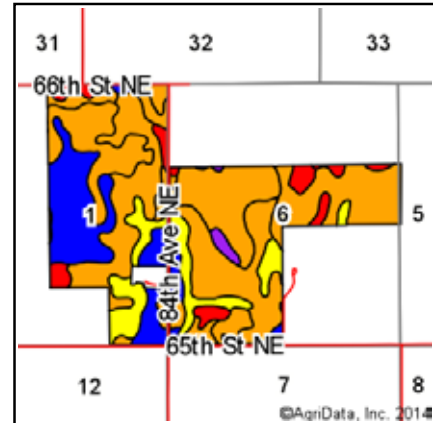


Farm #3 Soil Map (2 of 2)

The NRCS released a new set of soil data on November 6th, 2014. In some cases, soil productivity ratings were changed. We have included the soil data used prior to the 7th of November and the current soil data for reference.

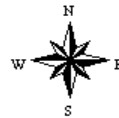


Soils data provided by USDA and NRCS.



(Lines Approximate)

State: **North Dakota**
 County: **Ramsey**
 Location: **6-156N-63W**
 Township: **Harding**
 Acres: **608.43**
 Date: **11/25/2014**



Maps Provided By:
surety
 CUSTOMIZED ONLINE MAPPING
 © AgriData, Inc. 2014 www.AgriDataInc.com

Area Symbol: ND071, Soil Area Version: 20

Code	Soil Description	Acres	Percent of field	PI Legend	Non-Irr Class	Productivity Index
F101A	Hamerly-Wyard loams, 0 to 3 percent slopes	172.71	28.4%		IIc	77
F143B	Barnes-Svea loams, 3 to 6 percent slopes	136.17	22.4%		Ile	75
F143A	Barnes-Svea loams, 0 to 3 percent slopes	107.17	17.6%		IIc	85
F135A	Hamerly-Cresbard loams, 0 to 3 percent slopes	88.07	14.5%		IIs	76
F144B	Barnes-Buse loams, 3 to 6 percent slopes	64.03	10.5%		Ile	69
F119A	Vallers-Hamerly loams, saline, 0 to 3 percent slopes	11.64	1.9%		IVs	45
F3A	Parnell silty clay loam, 0 to 1 percent slopes	10.41	1.7%		Vw	25
F411A	Fargo-Hegne silty clays, 0 to 1 percent slopes	8.93	1.5%		IVw	40
F680C	Barnes-Sioux complex, 3 to 9 percent slopes	5.51	0.9%		IVs	55
F4A	Southam silty clay loam, 0 to 1 percent slopes	3.79	0.6%		VIIIw	9
Weighted Average						74.3

Area Symbol: ND071, Soil Area Version: 20

Field borders provided by Farm Service Agency as of 5/21/2008. Aerial photography provided by Aerial Photography Field Office.



Farm #3 Abbreviated 156 EZ (1 of 2)

Form : FSA-156EZ



United States Department of Agriculture
Farm Service Agency

Program Year : 2014

Date : Jan 31, 2014

See Page 5 for non-discriminatory Statements.

Abbreviated 156 Farm Record

State : NORTH DAKOTA
County : RAMSEY

Farm Number : 4366
Tract Number : 376

Description : SN6-156-63

FAV/WR History : Yes

BIA Unit Range Number :

HEL Status : NHEL: No agricultural commodity planted on undetermined fields

Wetland Status : Tract contains a wetland or farmed wetland

WL Violations :

Owners : JON HAROLD SAASTAD , PAUL ANTON SAASTAD

Other Producers :

Tract Land Data

Farm Land	Cropland	DCP Cropland	WBP	WRP	CRP	GRP	
157.57	156.79	156.79	0.00	0.00	0.00	0.00	
State Conservation	Other Conservation	Effective DCP Cropland	Double Cropped	MPL	FWP	EWP	DCP Ag. Related Activity
0.00	0.00	156.79	0.00	0.00	0.00	0.00	0.00

DCP Crop Data

Crop Name	Base Acres	CCC-505 CRP Reduction Acres	PTPP Reduction Acres	Direct Yield	Counter Cyclical Yield
-----------	------------	-----------------------------	----------------------	--------------	------------------------



Farm #3 Abbreviated 156 EZ (2 of 2)

Form : FSA-156EZ



United States Department of Agriculture
Farm Service Agency

Program Year : 2014

Date : Jan 31, 2014

Abbreviated 156 Farm Record

State : NORTH DAKOTA
County : RAMSEY

Farm Number : 4366
Tract Number : 10338

Description : SW6-156-63

FAV/WR History : Yes

BIA Unit Range Number :

HEL Status : NHEL: No agricultural commodity planted on undetermined fields

Wetland Status : Tract contains a wetland or farmed wetland

WL Violations :

Owners : JON HAROLD SAASTAD , PAUL ANTON SAASTAD

Other Producers :

Tract Land Data

Farm Land	Cropland	DCP Cropland	WBP	WRP	CRP	GRP
149.54	149.54	149.54	0.00	0.00	0.00	0.00

State Conservation	Other Conservation	Effective DCP Cropland	Double Cropped	MPL	FWP	EWP	DCP Ag. Related Activity
0.00	0.00	149.54	0.00	0.00	0.00	0.00	0.00

DCP Crop Data

Crop Name	Base Acres	CCC-505 CRP Reduction Acres	PTPP Reduction Acres	Direct Yield	Counter Cyclical Yield
Wheat	95.80	0.00	0.00	34	34
Sunflowers	4.90	0.00	0.00	1261	1261
Soybeans	2.10	0.00	0.00	24	24
Barley	29.60	0.00	0.00	41	41
TOTAL	132.40	0.00	0.00		

State : NORTH DAKOTA
County : RAMSEY

Farm Number : 4366
Tract Number : 10339

Description : NE-NSE-SESE1-156-64-

FAV/WR History : Yes

BIA Unit Range Number :

HEL Status : NHEL: No agricultural commodity planted on undetermined fields

Wetland Status : Tract contains a wetland or farmed wetland

WL Violations :

Owners : JON HAROLD SAASTAD , PAUL ANTON SAASTAD

Other Producers :

Tract Land Data

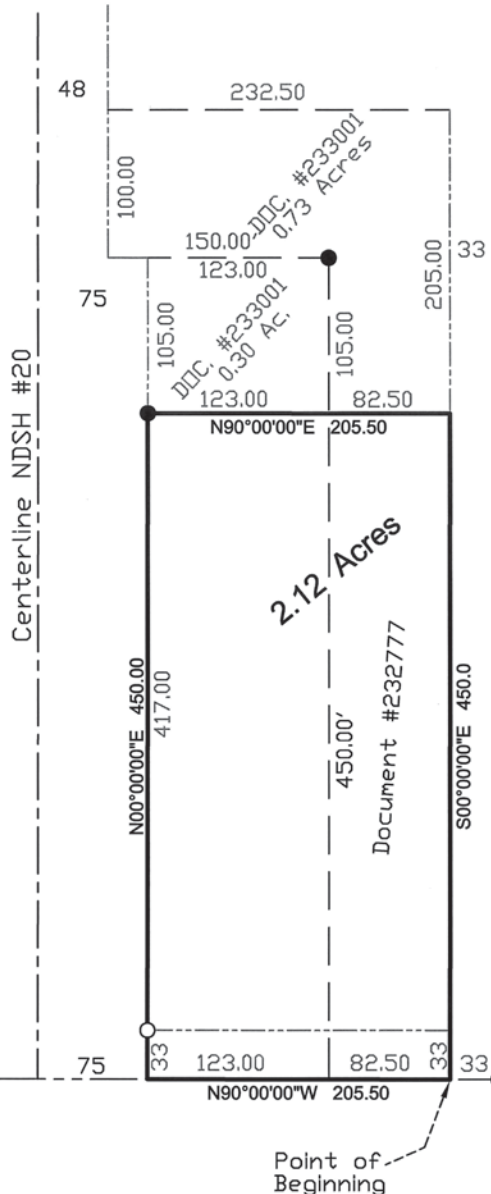
Farm Land	Cropland	DCP Cropland	WBP	WRP	CRP	GRP
306.23	297.87	297.87	0.00	0.00	0.00	0.00

State Conservation	Other Conservation	Effective DCP Cropland	Double Cropped	MPL	FWP	EWP	DCP Ag. Related Activity
0.00	0.00	297.87	0.00	0.00	0.00	0.00	0.00

DCP Crop Data

Crop Name	Base Acres	CCC-505 CRP Reduction Acres	PTPP Reduction Acres	Direct Yield	Counter Cyclical Yield
Wheat	190.80	0.00	0.00	34	34
Sunflowers	9.90	0.00	0.00	1261	1261
Soybeans	4.00	0.00	0.00	24	24
Barley	59.10	0.00	0.00	41	41
TOTAL	263.80	0.00	0.00		

Bin Site - Information



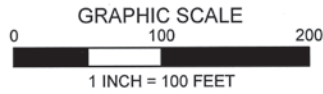
PARCEL DESCRIPTION:

A parcel of land situated in the SE 1/4 of Section 4, T156N R64W of the 5th Principal Meridian, Ramsey County, North Dakota being more particularly described as follows:

Commencing at the Southeast corner of said Section 4; thence N90°00'00"W along the South line of said Section 4 a distance of 33.00 feet to the **point of beginning**; thence continuing along said Section line N90°00'00"W a distance of 205.50 feet; thence N00°00'00"E parallel with the East line of Section 4 a distance of 450.00 feet; thence N90°00'00"E parallel with the South line of Section 4 a distance of 205.50 feet; thence S00°00'00"E parallel with the East line of Section 4 a distance of 450.00 feet to the point of beginning. Said parcel of land contains 2.12 acres, more or less and is subject to a 33 feet township road easement along the South boundary line. No other record of easements researched.



NORTH



- BOUNDARY LINE
- - - SECTION LINE
- · - · - RIGHT OF WAY LINE
- · - - ADJACENT PROPERTY LINE
- MONUMENT SET
- MONUMENT FOUND
- - - - HIGHWAY CENTERLINE

SE Corner Section 4, T156N, R64W

Point of Beginning



State of North Dakota)
County of Ramsey) SS

I hereby certify that this instrument was filed in this office of record on this _____ day of _____, _____ A.D. at _____ O'clock __ m. and was filed as document number _____, filed in Land Survey Book _____ Page _____.

Katie Nadeau
Ramsey County Recorder



Surveyors Certificate

I hereby certify that this survey, plan, or report was prepared by me or under my direct supervision, and that I am a duly registered land surveyor under the laws of the State of North Dakota.

Date:
DEC. 9, 2011

SHEET
1 OF 1

	507 3rd Street NE Devils Lake, ND 58301 701-662-8065 lss@gondtc.com	CLIENT SAASTAD FARMS	PROJECT 2011293	PROJECT LOCATION SEC. 4, T.156 N., R.64W., RAMSEY COUNTY, NORTH DAKOTA
	David K. Hoyendick ND Registration No. 3612			

Bin Site - Tax & Location Information

10-0000-04143-051

6193 85TH AVE NE
WEBSTER ND 58382-9683

Tax District: WEBSTER
School District: STARKWEATHER
Ambulance District: NONE
Fire Protection District: STARKWEATHER
Park District:

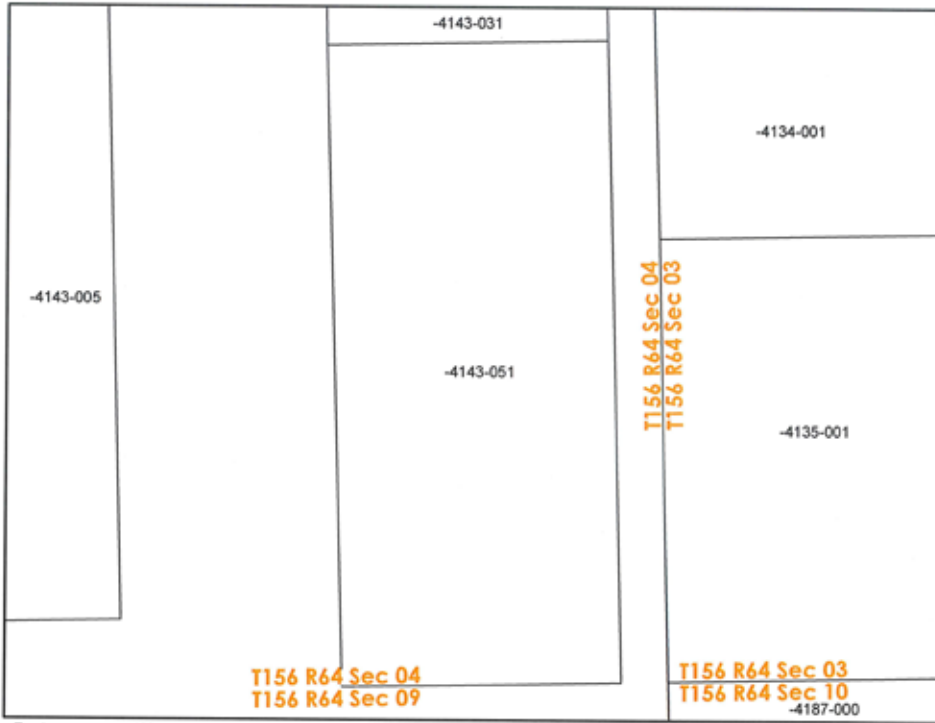
Farm Acres: 2.12

Disclaimer: Ramsey County does not warrant or guarantee the accuracy of the data. Ramsey County assumes no responsibility for actual or consequential damage incurred as a result of any user's reliance of this data. If you have questions regarding the data presented in this map, please contact Ramsey County.

0 45 90 180 Feet



Imagery: USDA-NRIP, 2012



Tax data current as of May 1, 2013

TRACT IN SE1/4 CONT 2.12A 4 156 64 (S/S)

Treasurer

7016627062

2014 RAMSEY COUNTY REAL ESTATE TAX STATEMENT

Parcel Number: 10-0000-04143-051
Jurisdiction: WEBSTER TOWNSHIP

Statement No: 18,576

Physical Location

Lot: Blk: Sec: 4 Twp: 156 Rng: 64
Addition: TOWNSHIP Acres: 2.12

2014 TAX BREAKDOWN

Net consolidated tax	16.05
Plus: Special assessments	
Total tax due	16.06
Less: 5% discount, if paid by Feb.15th	.80
Amount due by Feb.15th	15.26

Statement Name
SAASTAD, JON & PAUL

Legal Description
TRACT IN SE1/4 CONT 2.12A 4 156 64 (S/S)

Or pay in 2 installments (with no discount):
Payment 1: Pay by Mar.1st 8.03
Payment 2: Pay by Oct.15th 8.03

Legislative tax relief
(3-year comparison):

	2012	2013	2014
School levy reduction	4.05	7.47	8.33
12% state-pd tax credit		1.71	2.19
Total tax relief->	4.05	9.18	10.52

SPC# Special assessments:
AMOUNT DESCRIPTION

Tax distribution
(3-year comparison):

	2012	2013	2014
True and full value	1,088	1,390	1,564
Taxable value	54	70	78
Less: Homestead credit			
Veteran's credit			
Net taxable value->	54	70	78

Total mill levy: 2012: 247.87, 2013: 203.98, 2014: 233.99

Taxes By District (in dollars):

District	2012	2013	2014
COUNTY	7.14	7.63	9.68
TOWNSHIP	.97	1.26	1.40
SCHOOL	4.95	4.97	6.70
FIRE	.27	.35	.39
STATE	.05	.07	.08

NOTE:

Consolidated tax	13.38	14.28	18.25
Less: 12% state-pd credit		1.71	2.19
Net consolidated tax->	13.38	12.57	16.06
Net effective tax rate->	1.23%	.90%	1.03%

FOR ASSISTANCE, CONTACT:
RAMSEY COUNTY
COUNTY TREASURER
524 4TH AVE NE UNIT #20
DEVILS LAKE ND 58301-2400



Saastad Farm / Land for Rent

request for

february 2, 2015

2,504.71+/-
cropland acres

PROPOSAL



Saastad Farm / Land for Rent

Steffes Group, Inc., 2000 Main Avenue East, West Fargo, ND 58078
Scott Steffes ND81, Rodney Steffes, Max Steffes, ND999 - Agent
800.726.8609 | 701.237.9173 | SteffesGroup.com

